



Design Charette
Volterra Bastion | Adaptive Reuse
August 2019

Laurie Bishop, Drew Dancer,
Tristan Clauson, Danielle Spencer



Proposed solution

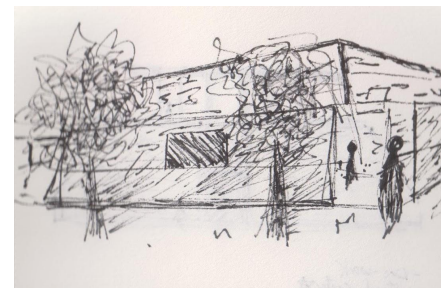
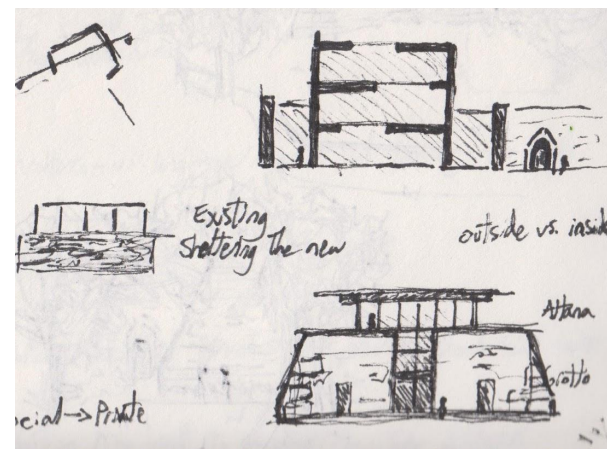
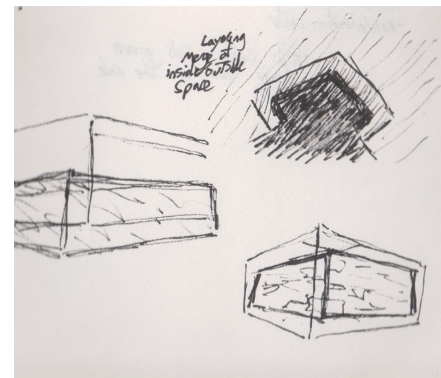
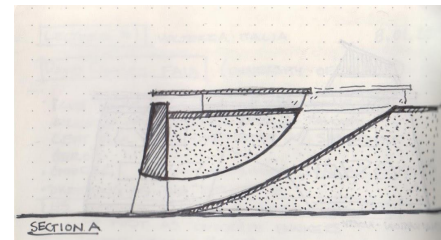
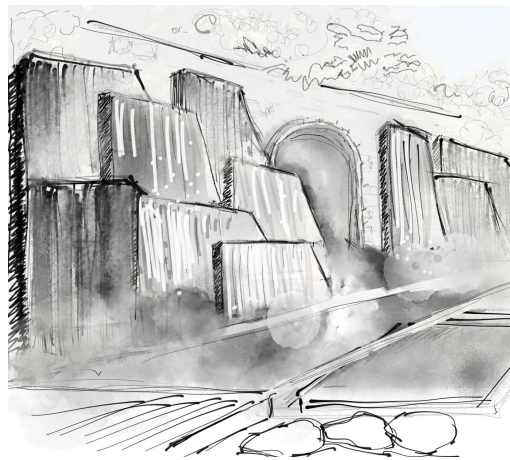
Our solution aims to blend young, local families with children while engaging new visitors through play. The goal is diminishing cultural barriers through multi-purpose shared space that encourages community growth.

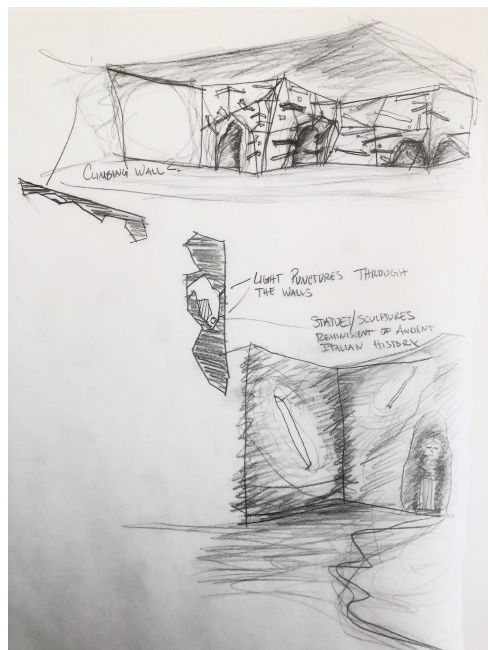
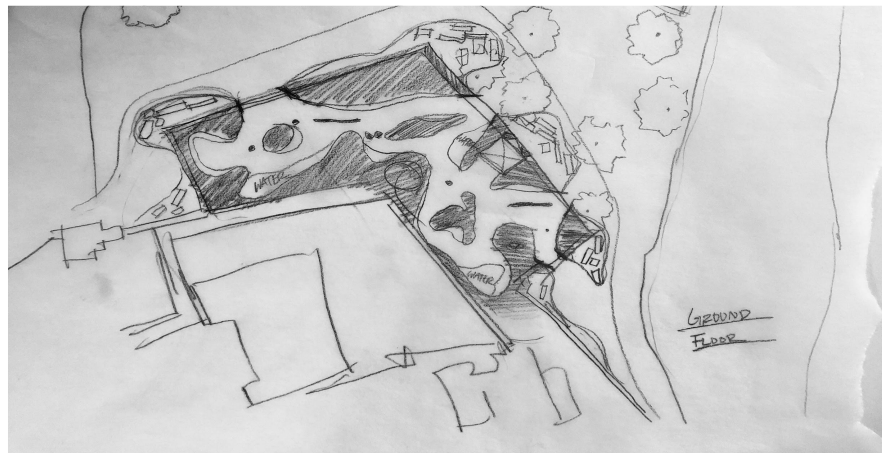
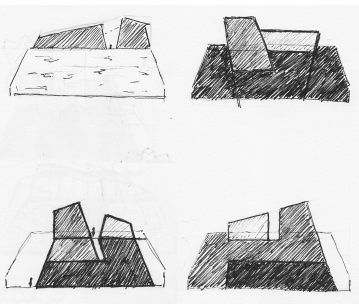




Process

01

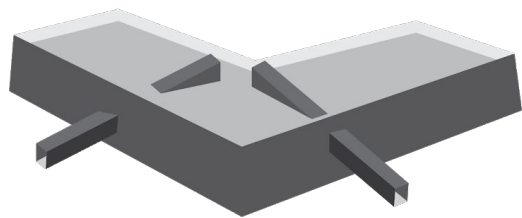






Form Study + Concept Diagrams

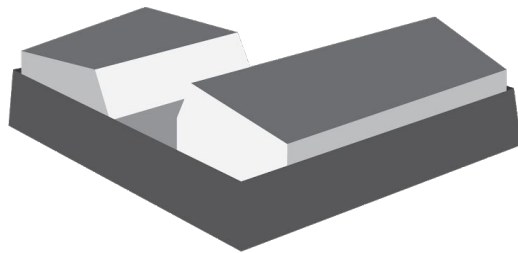
02



Vertical circulation

Main axis

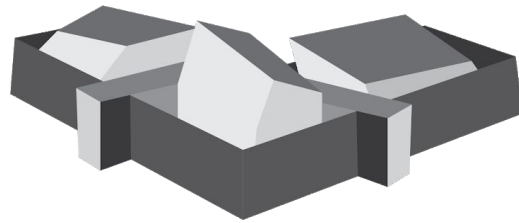
Interaction within existing wall



Separation of space

Openings

Enclosed within wall

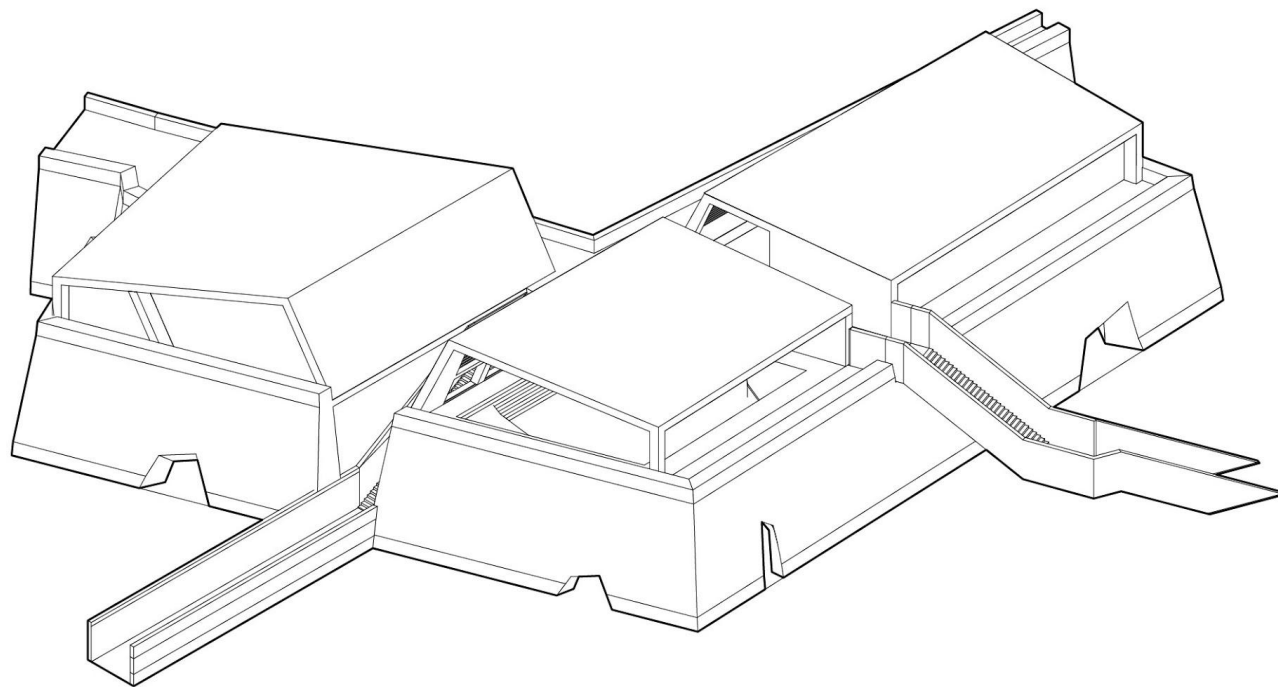


Tilted forms for lighting

Varying ceiling heights

Pushing+pulling through wall

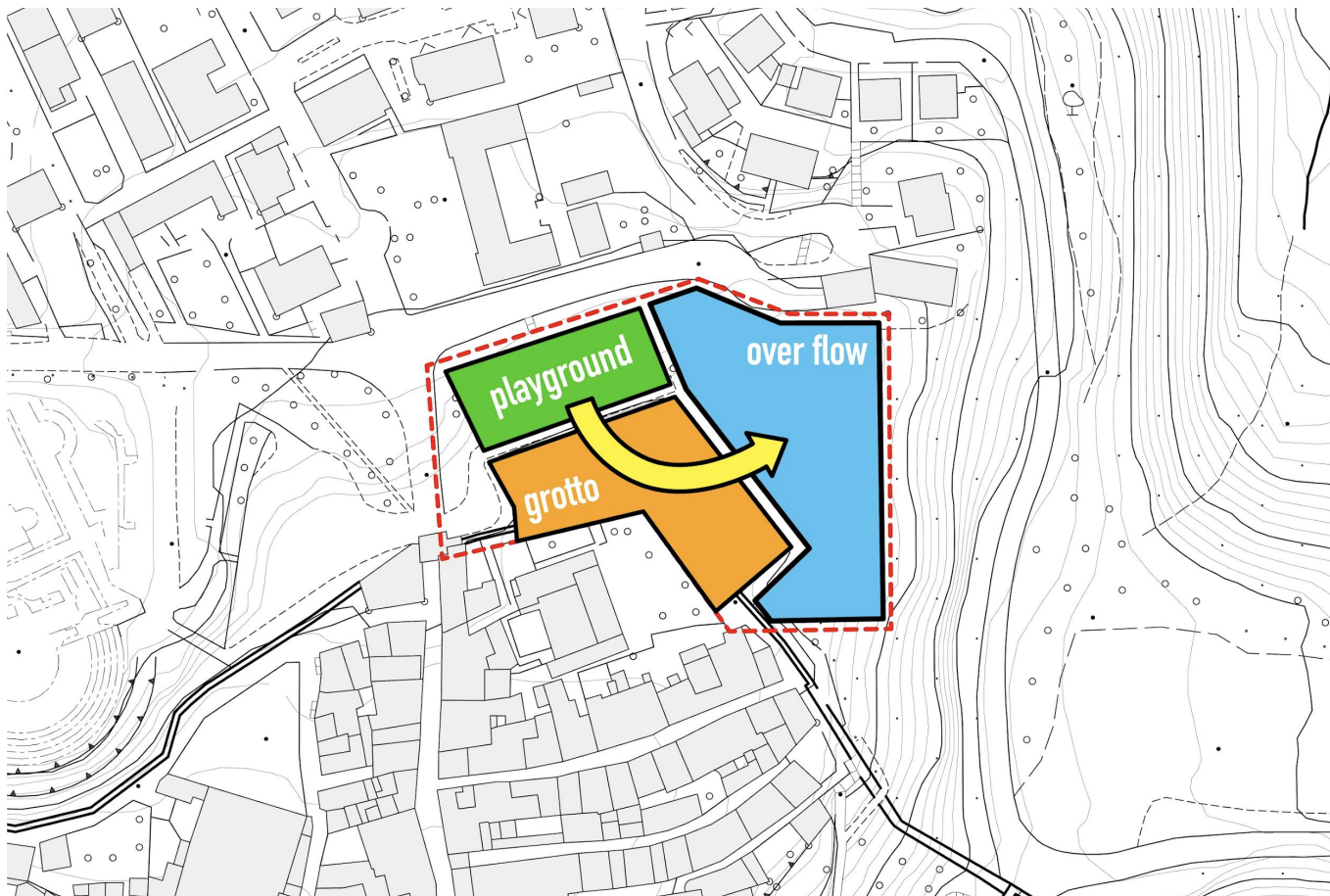
Axonometric





Final Drawings

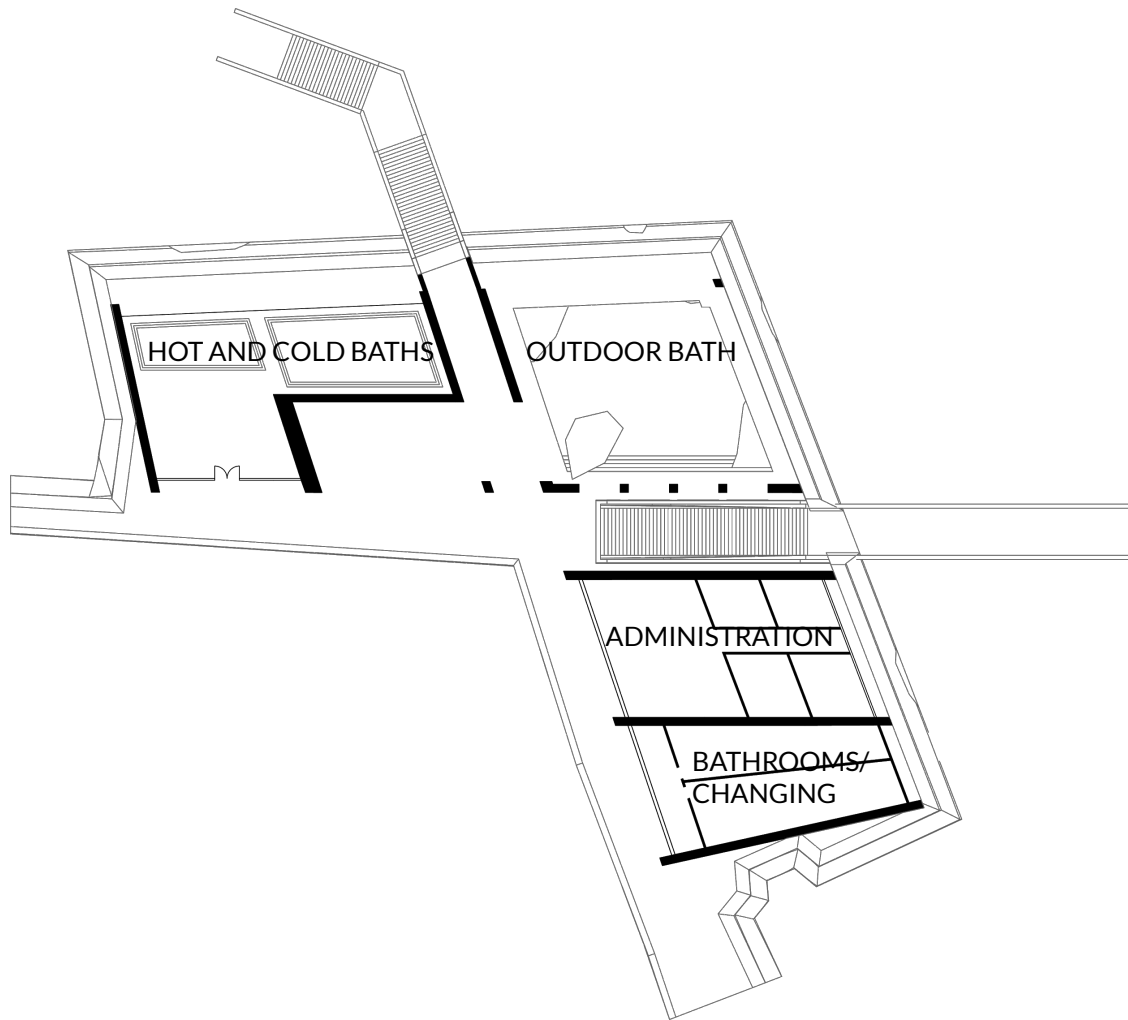
03



Site Ground Floor plan



Second Floor



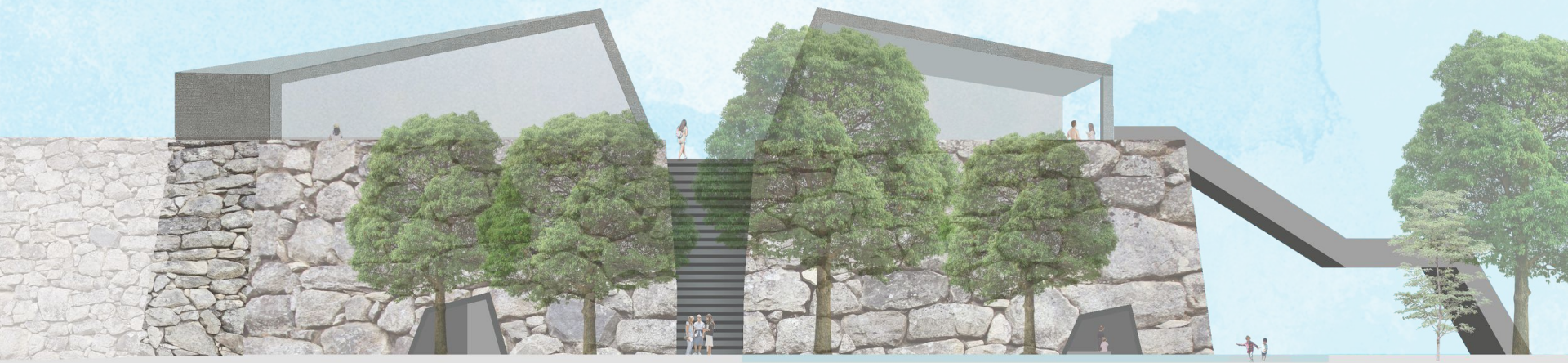


North Elevation



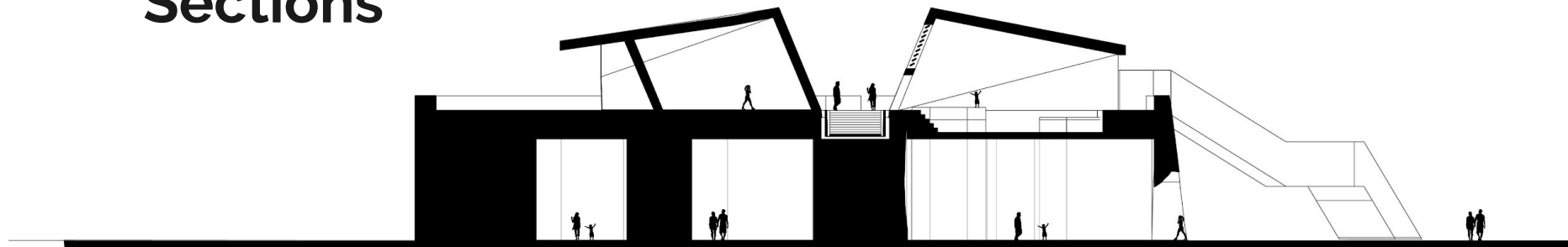


East Elevation

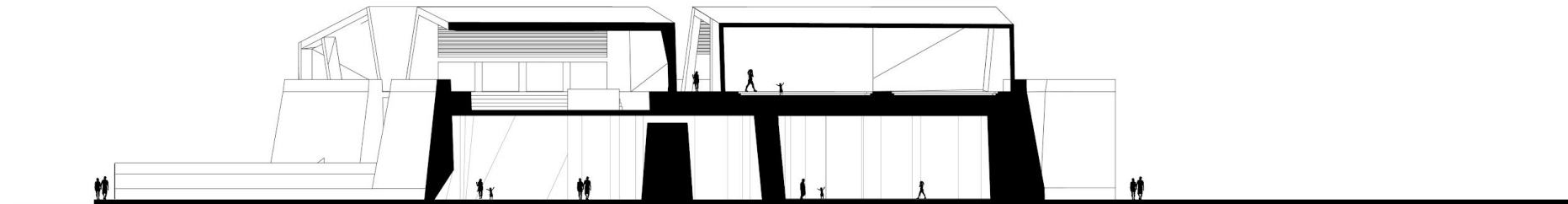




Sections

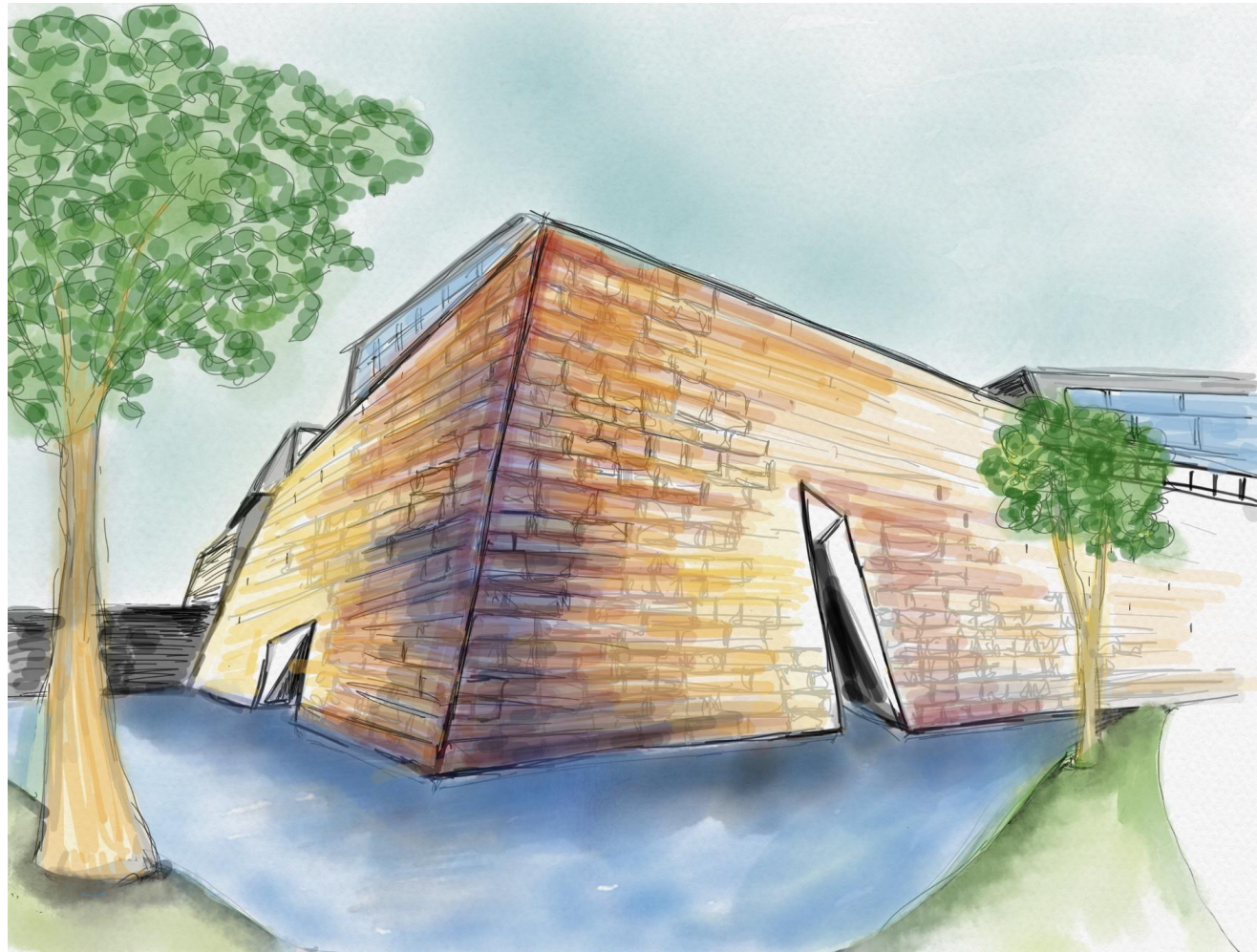


SECTION A



SECTION B

Bastion Concept exterior



Grotto Concept

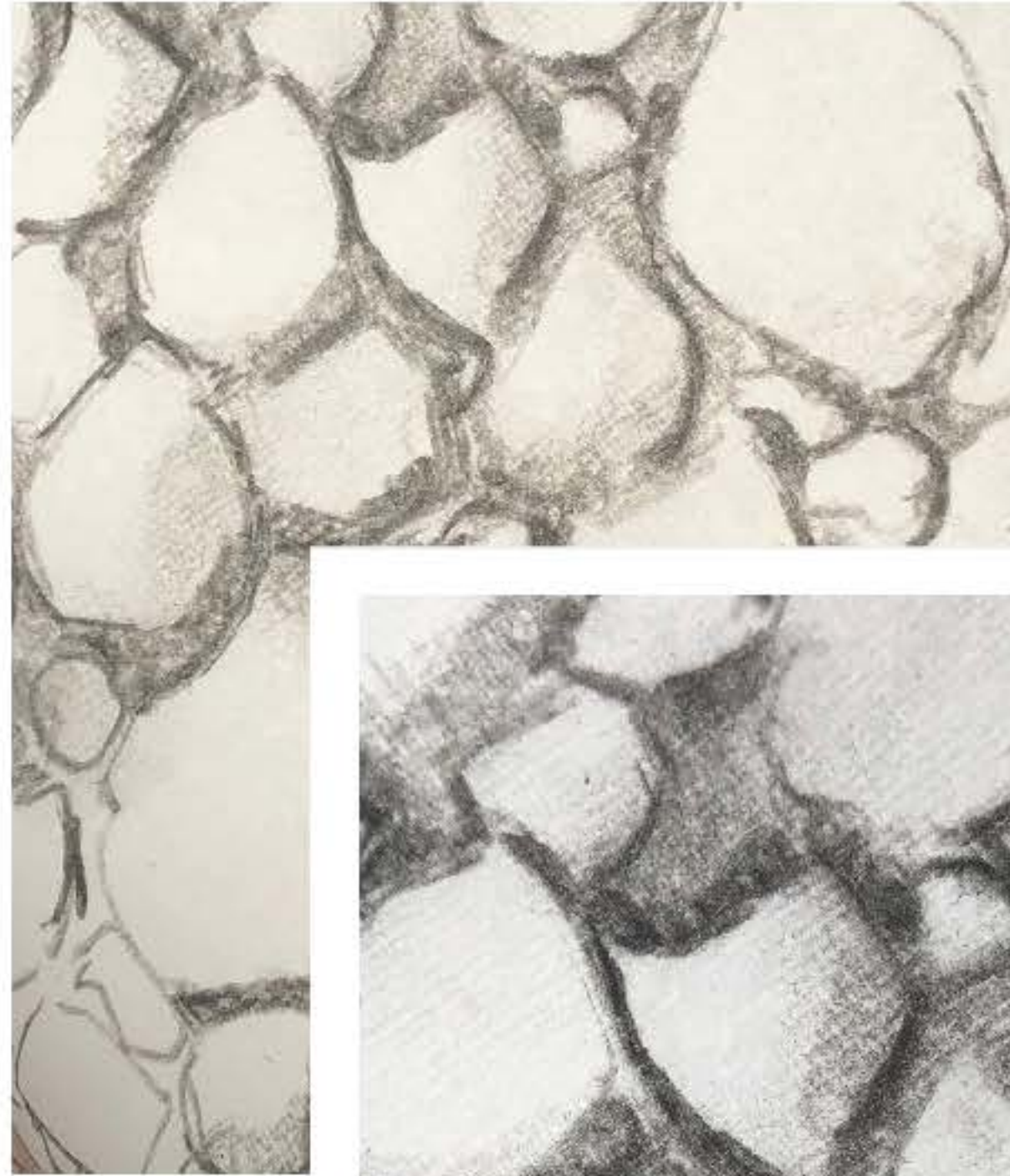
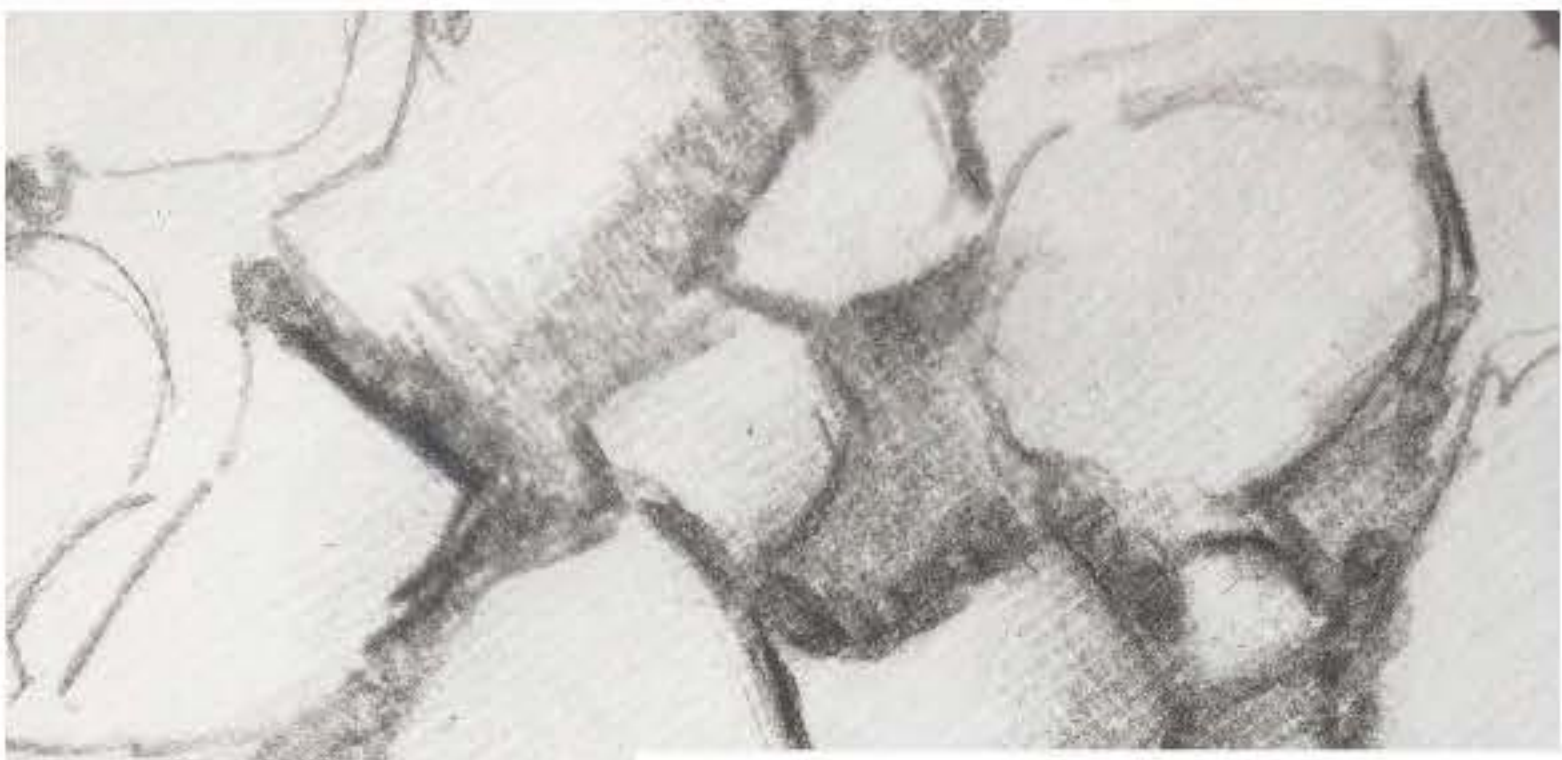


Level 3 adult spa concept





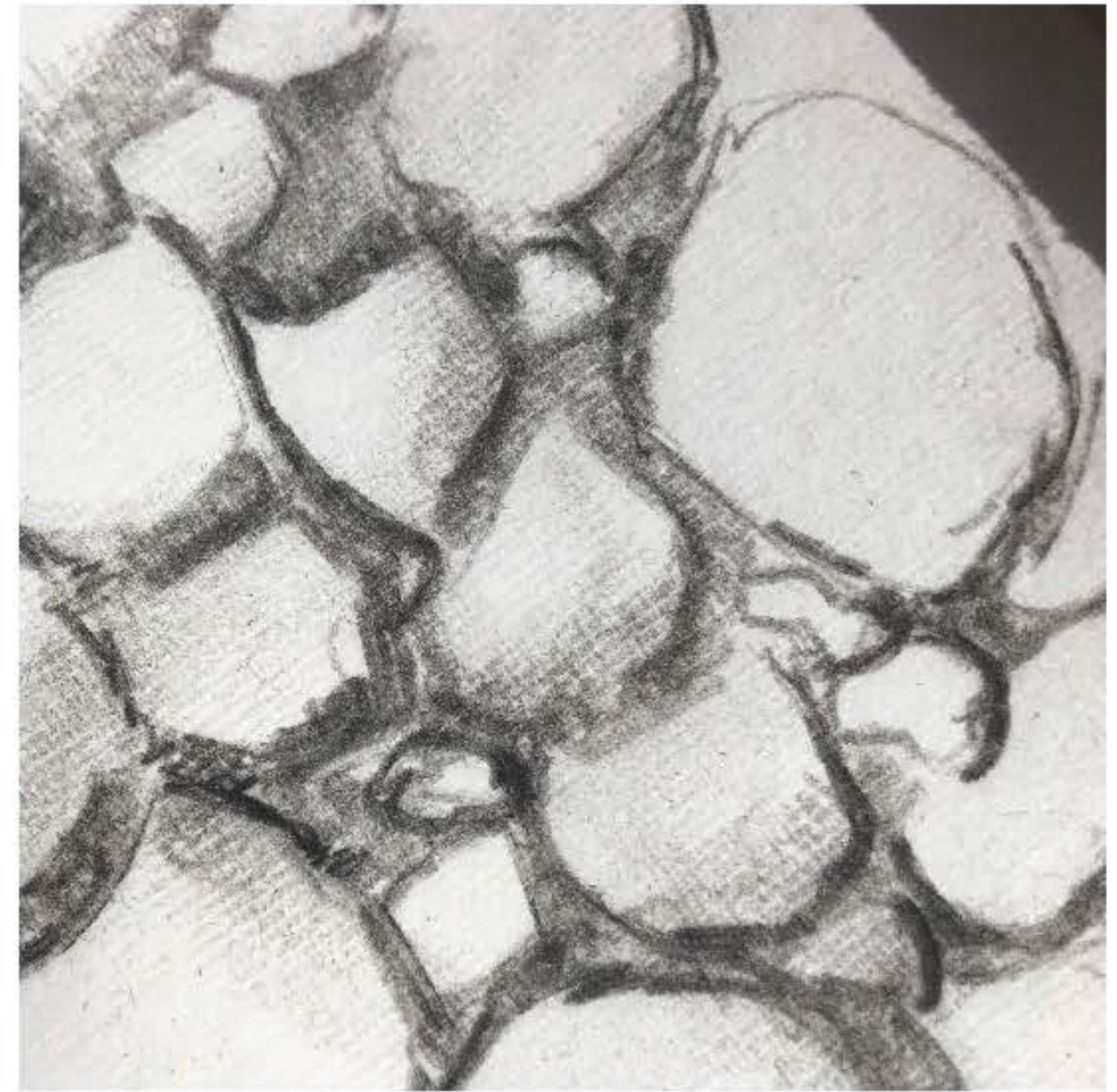
Thank you.



TEXTURE
STUDY
PRIOR
TO CLASS
ARRIVAL



STONES FROM COLOSSEUM
IN ROME

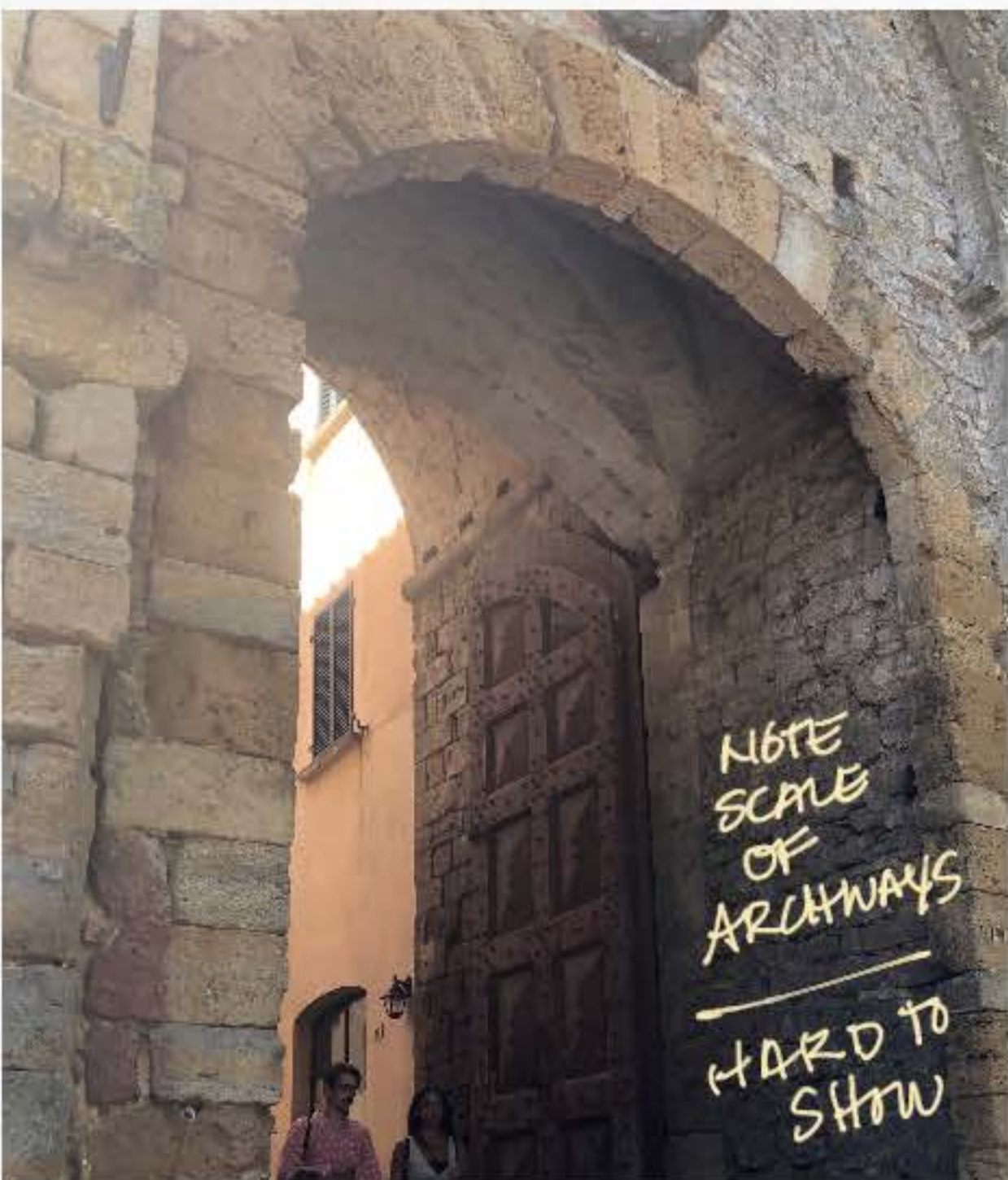
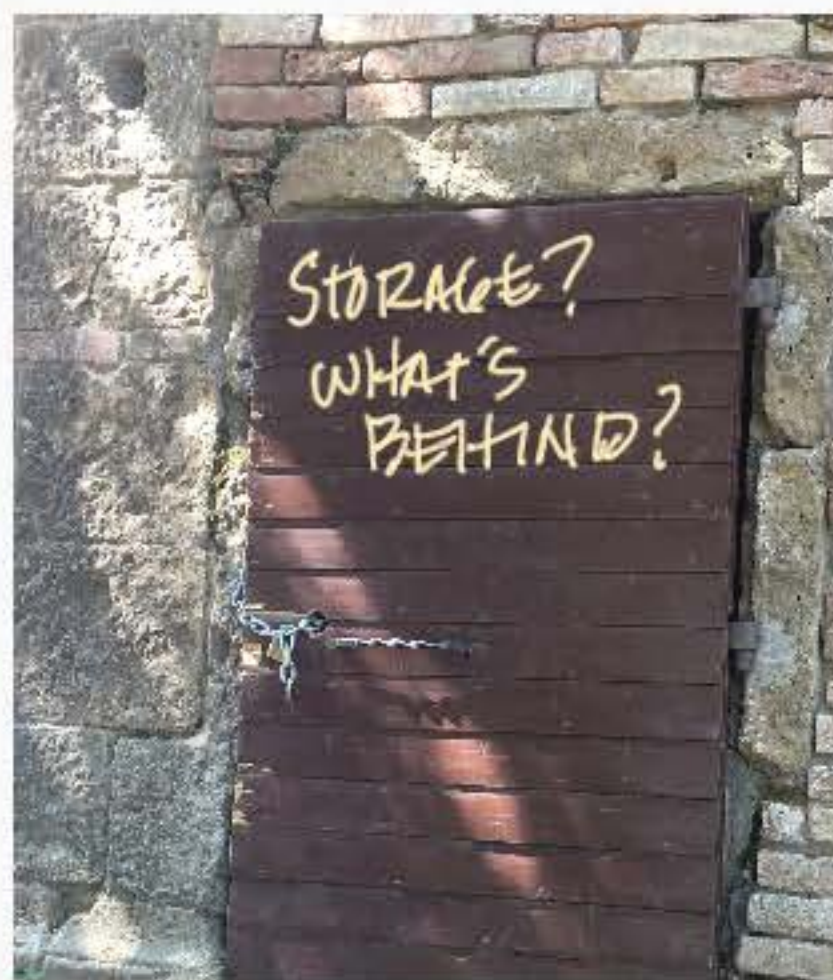
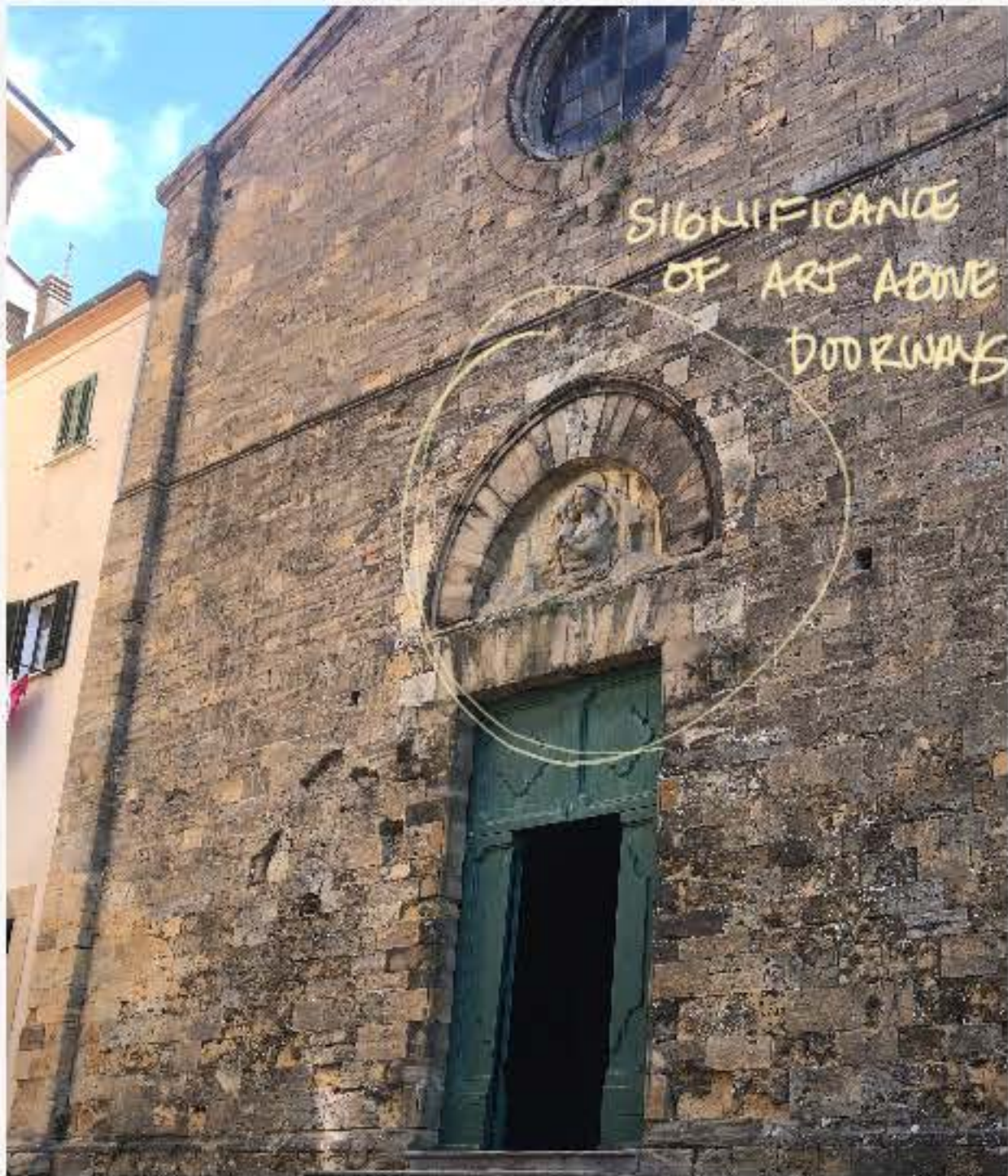


A Visual Journey in Adaptive Reuse:
Community Engagement
Volterra Italy,
Bastion Workshop
Sketchbook & Presentation

TEXTURE STUDY — DAY ONE VOLTERRA — PRIOR TO CLASS ARRIVAL —

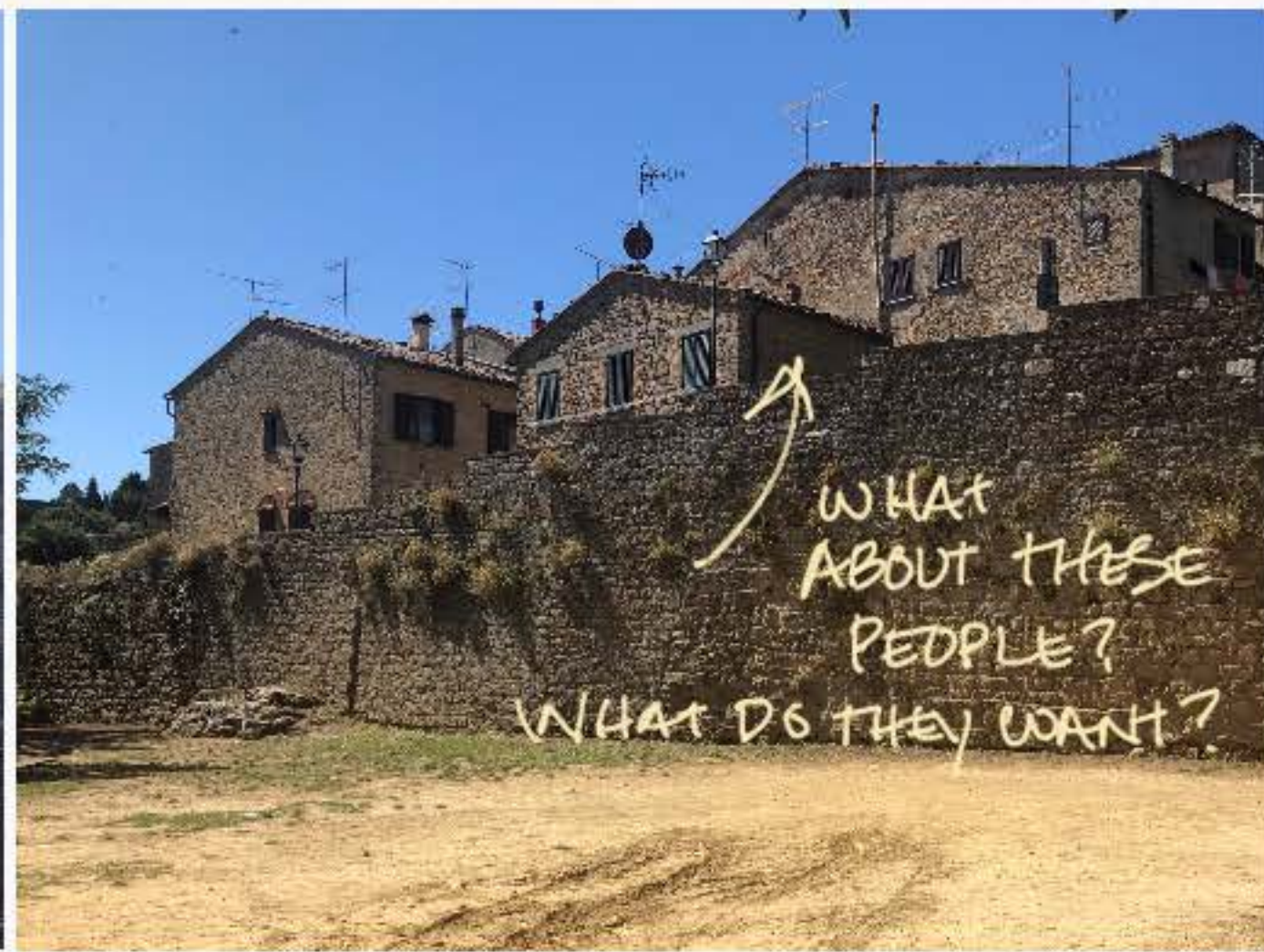


Texture studies | day one Volterra



Images for texture reference from day one.

IMAGES FROM DAY ONE
IN JOURNALS
PRIOR TO CLASS ARRIVAL



Original
bastion
investigation
photos

INITIAL INVESTIGATION
OF SITE



STAIRS
STAIRS
& MORE
STAIRS



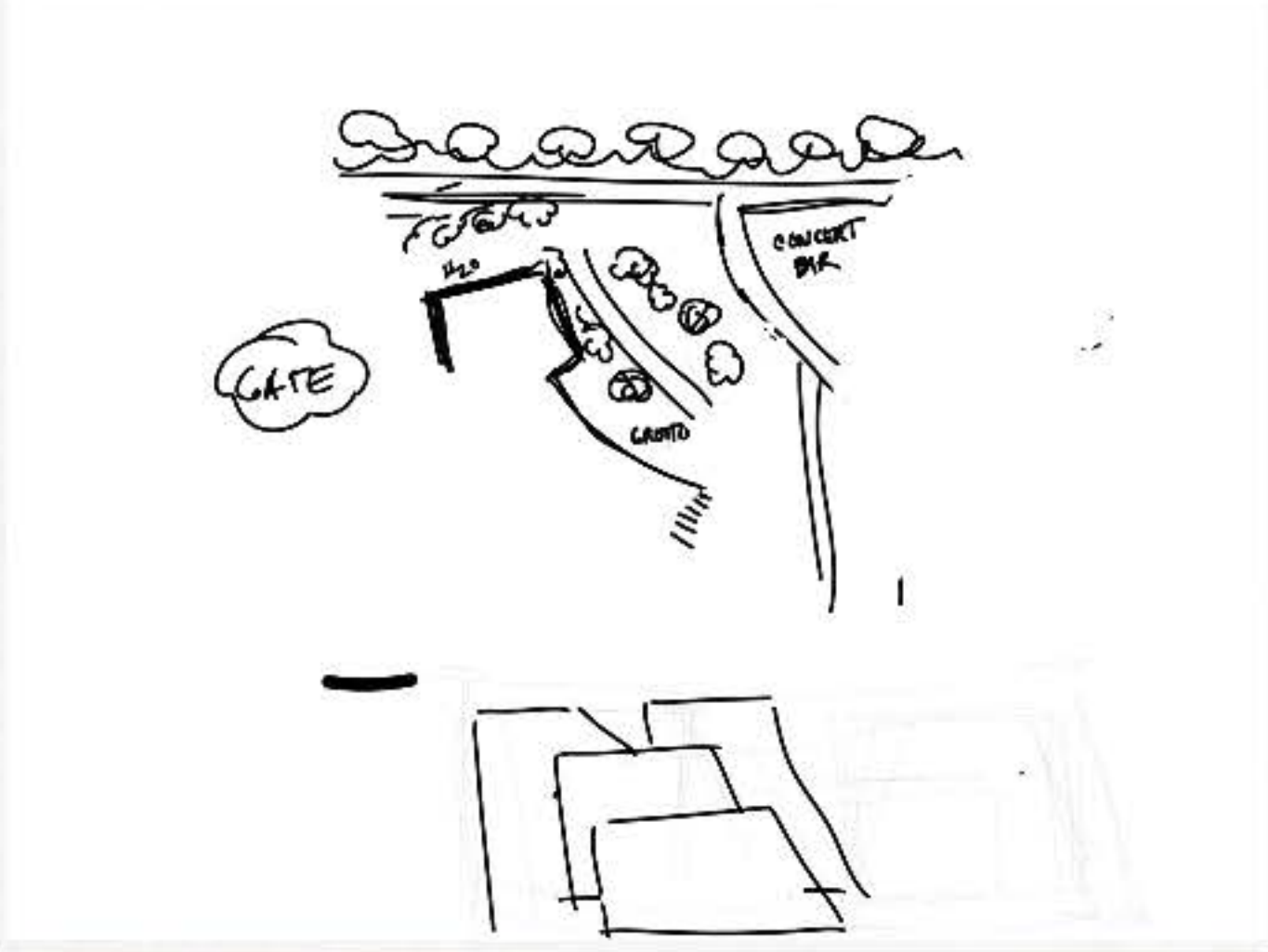
LIGHT & SHADOW
STUDY

KEEP AS MANY
TREES AS POSSIBLE

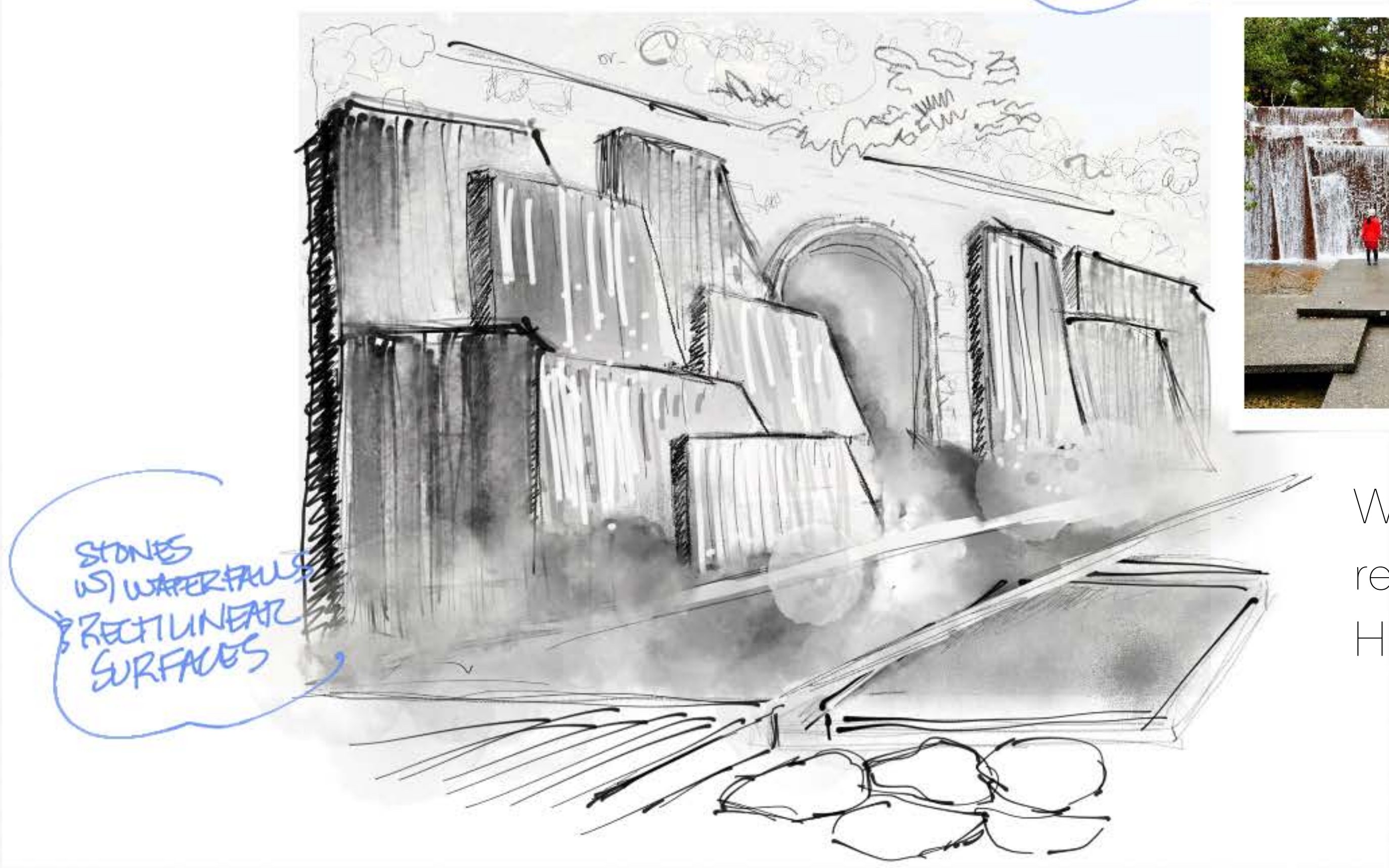
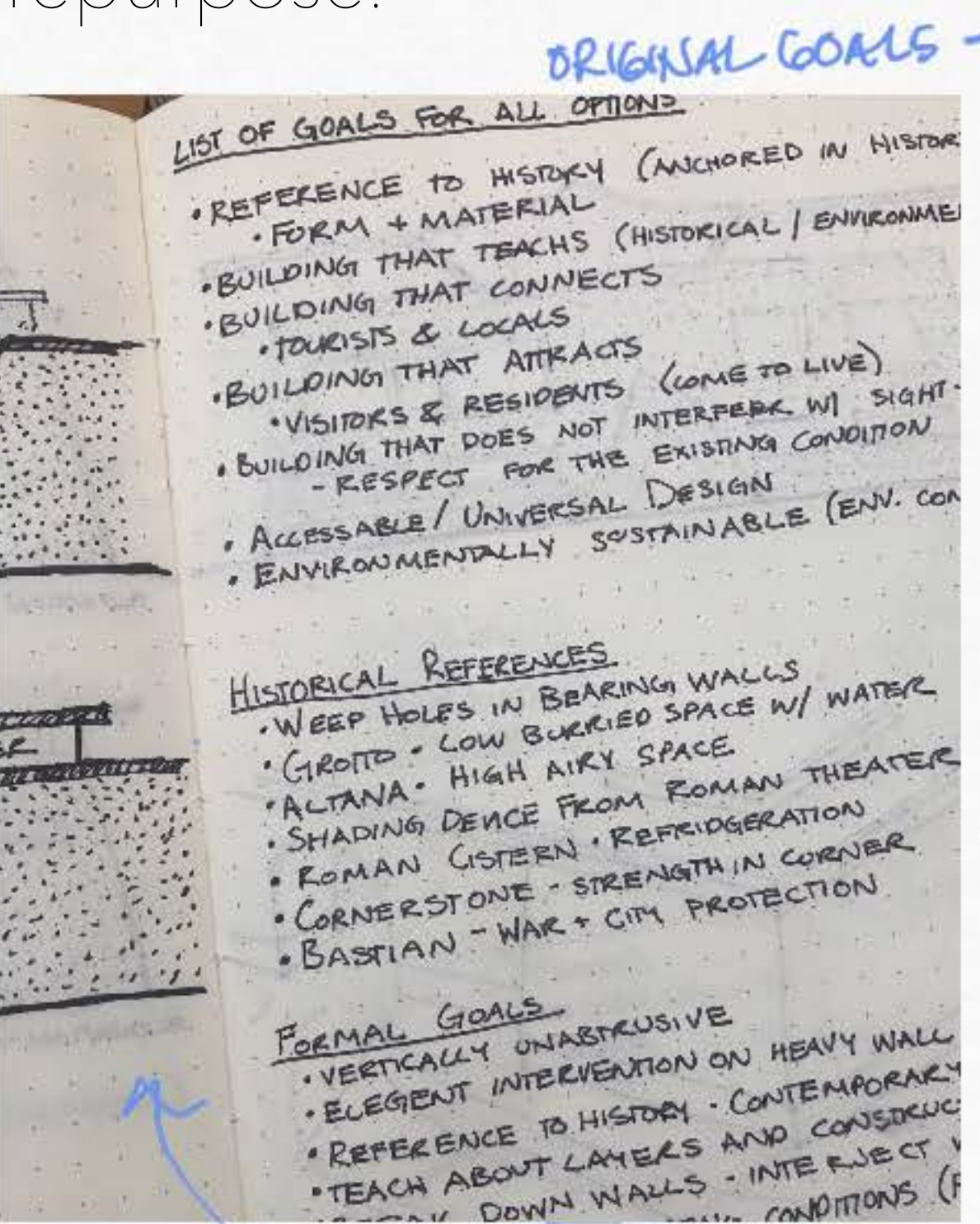
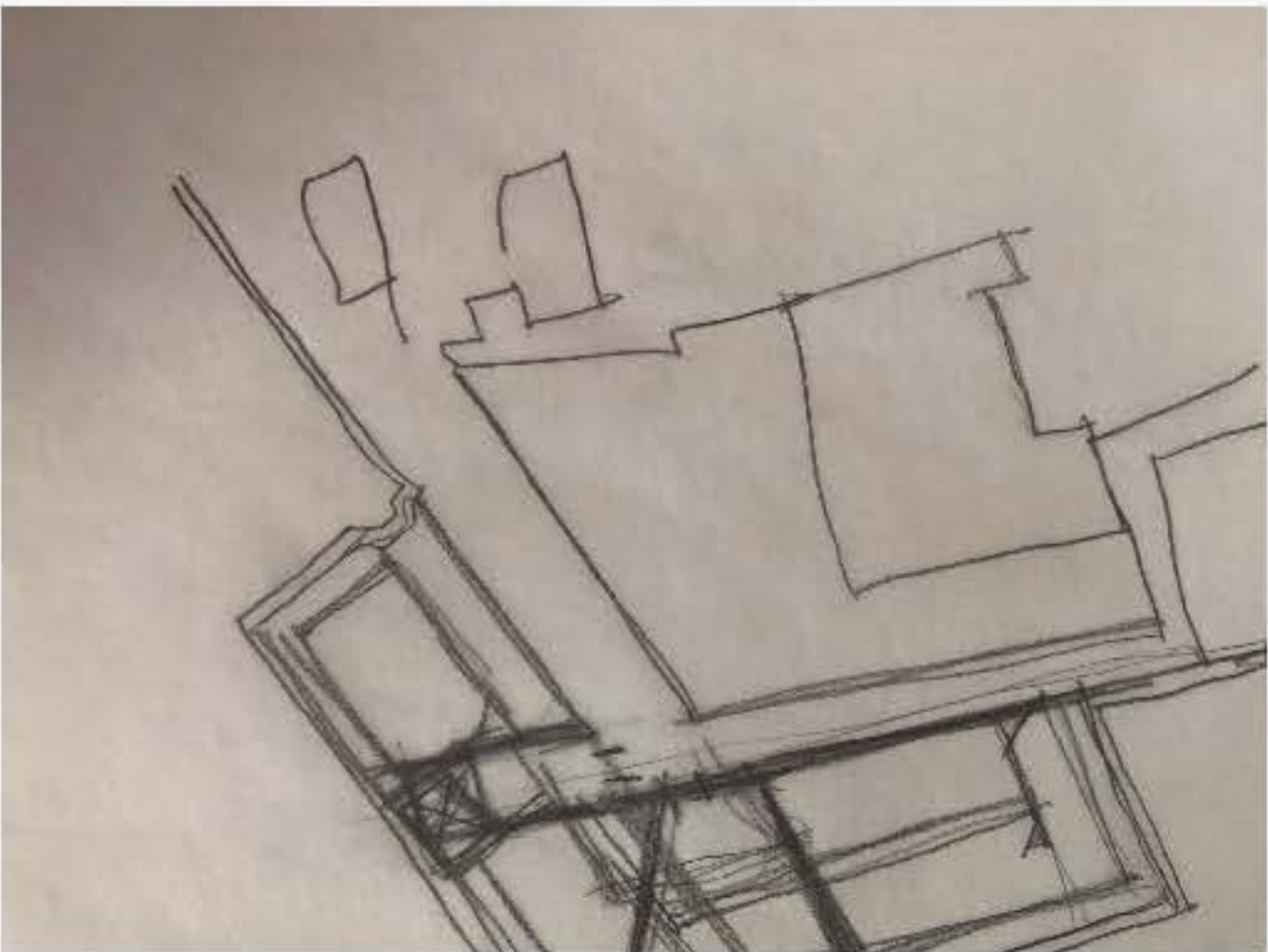
???



NOTE ANGLE ON CORNER -
RECALL THE STORY OF WAR.



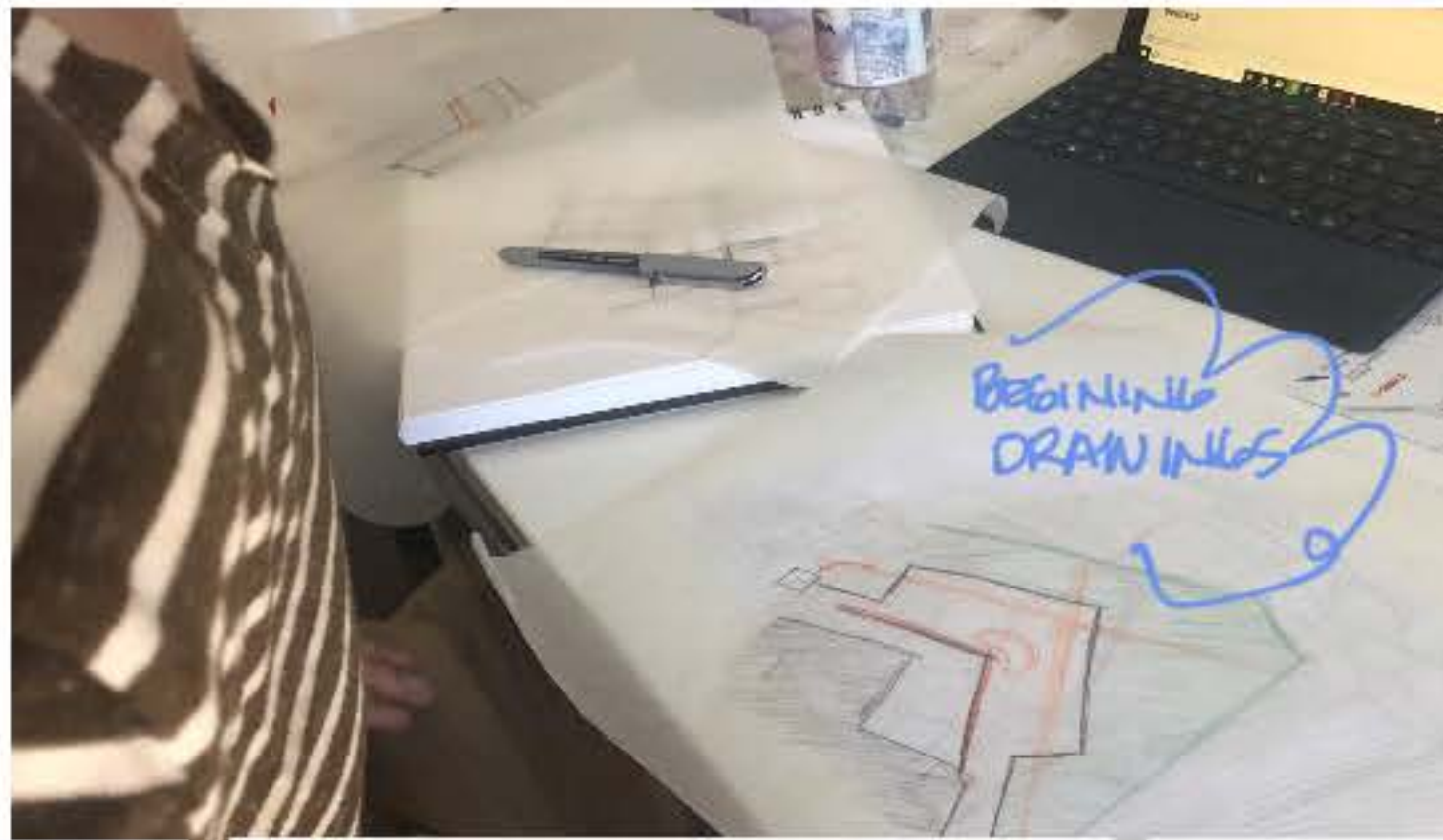
Initial drawing for bastion repurpose.



Team goal list as recorded by Drew Dancer above.



Waterfall reference: Lawrence Helprin



TRISTAN
& DANIELLE



Documenting team process and application

RENEWING OUR LOOK
@ THE SITE

SIGNAGE
ALREADY
APPARENT



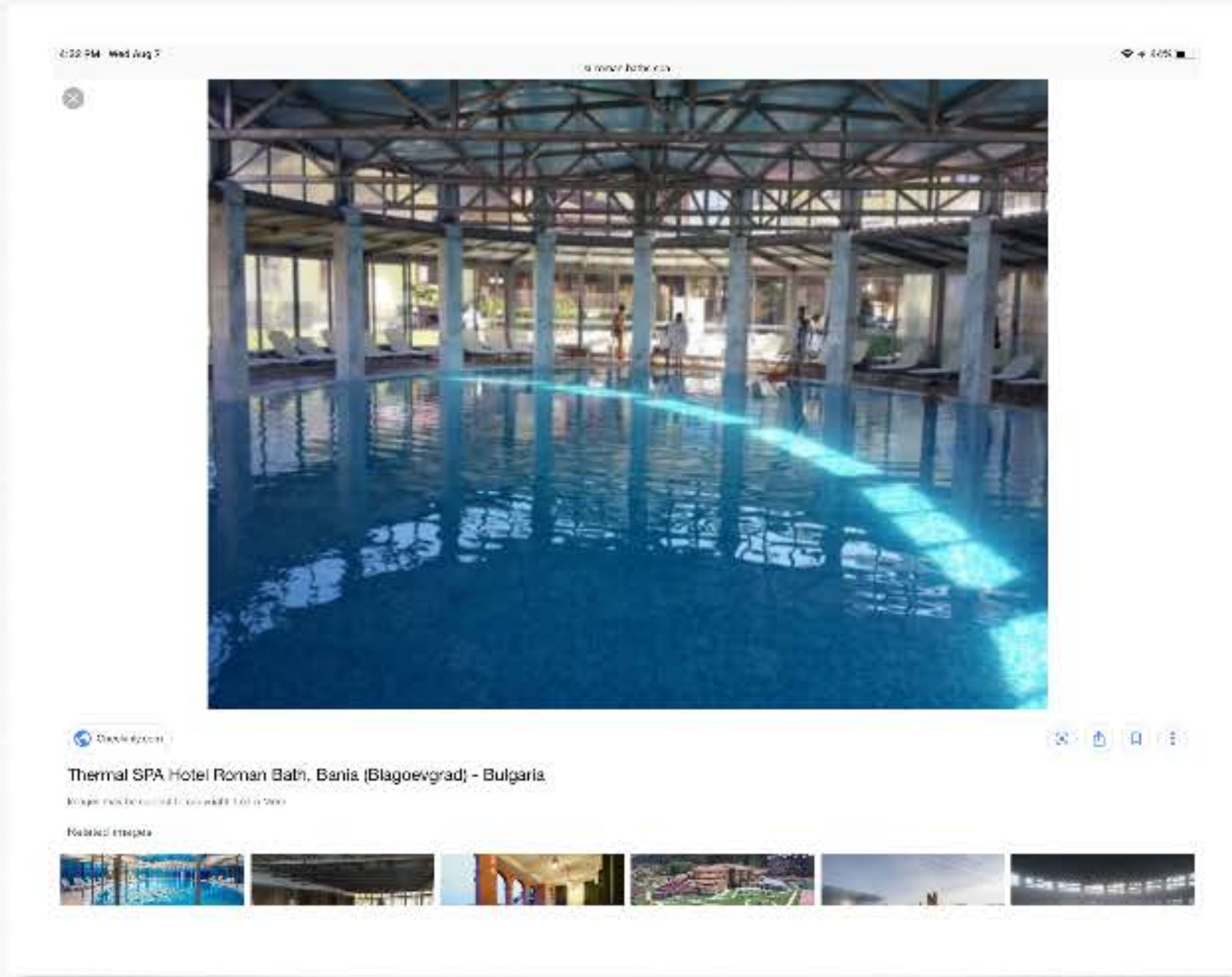
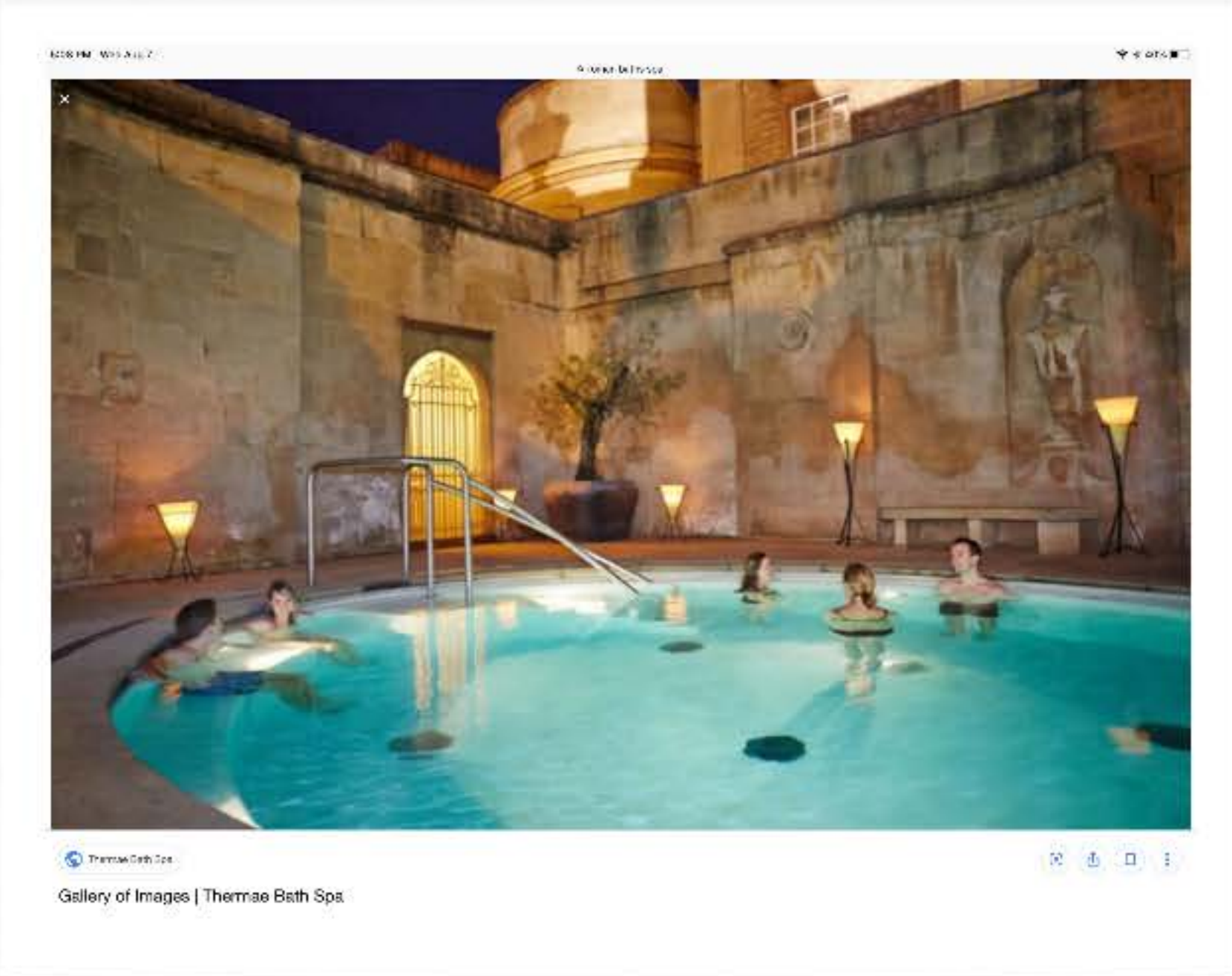
INTERESTING
DOORWAYS
PHOTO BY
TRISTAN

ENTRY
POINT
TO
CITY
NEAR
PARK

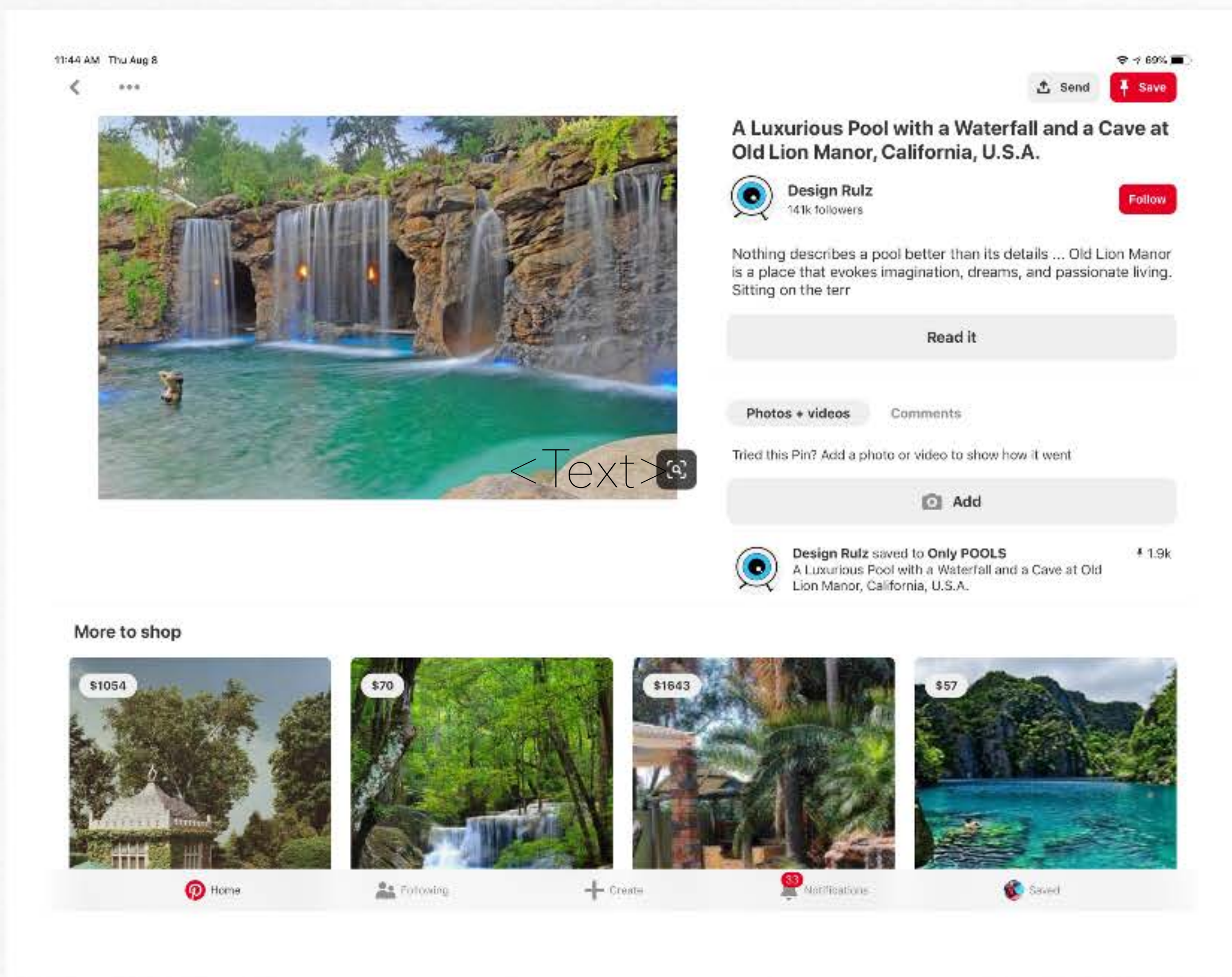
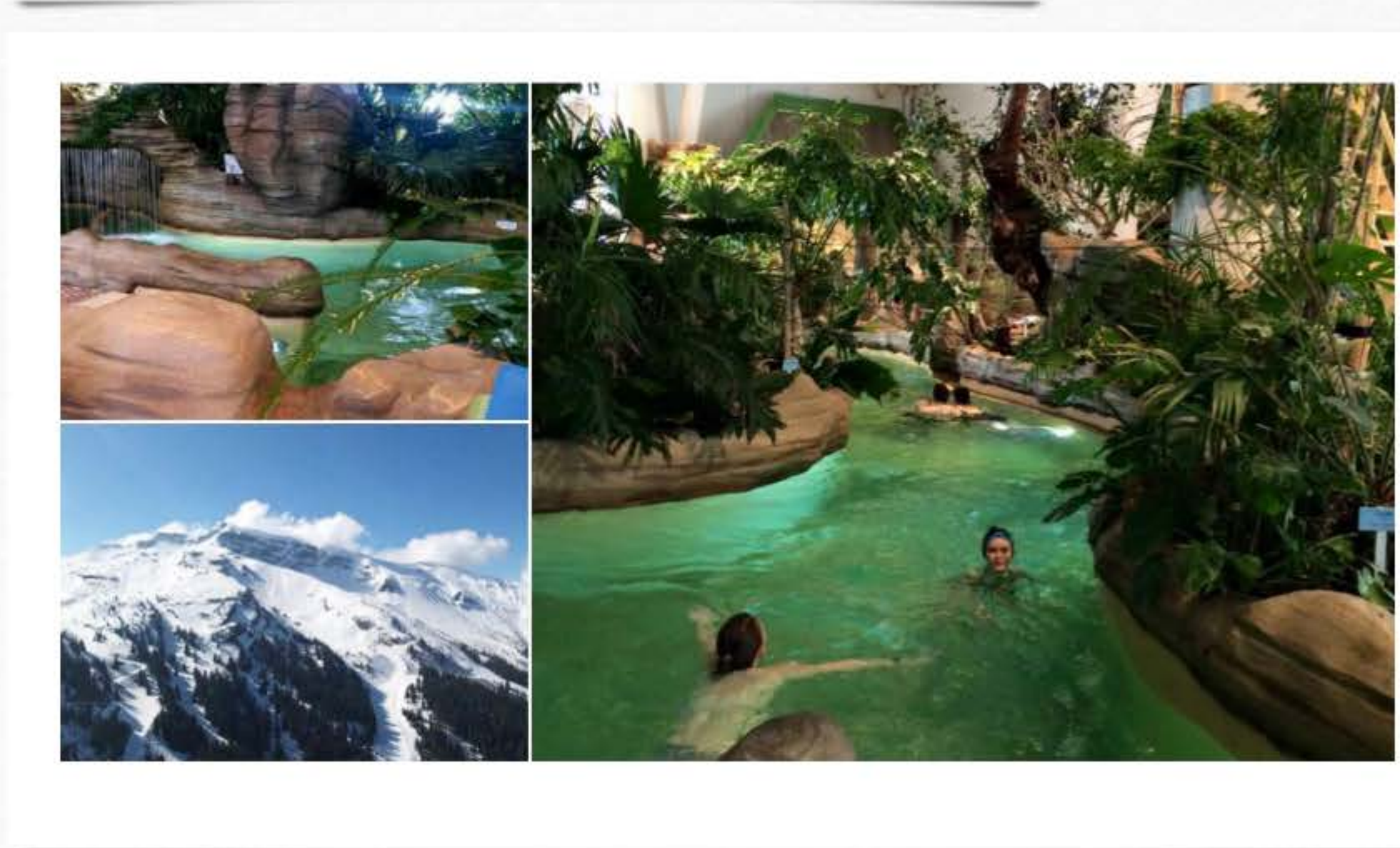
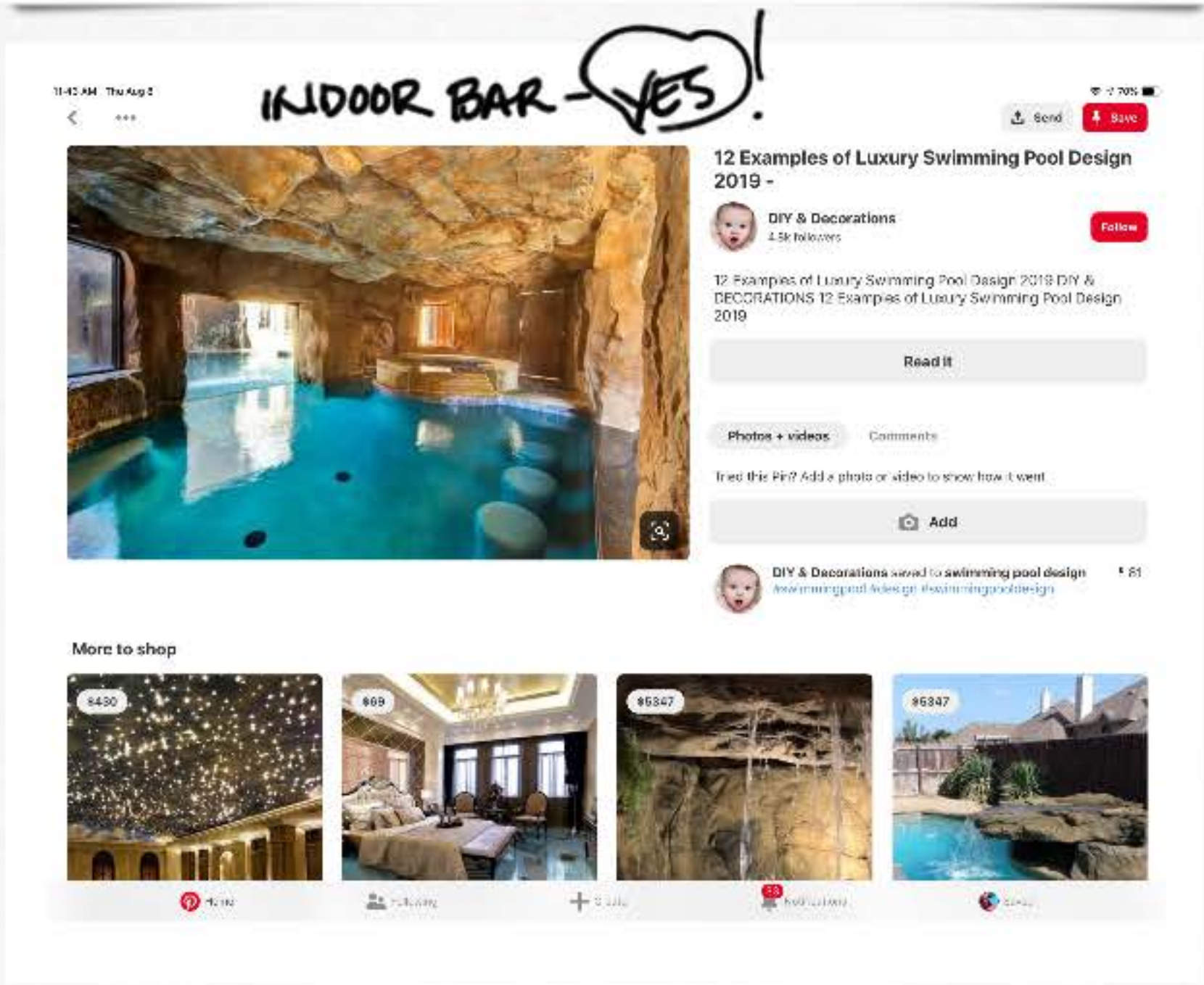


LIGHT &
SHADOWS
DAYTIME
PHOTO

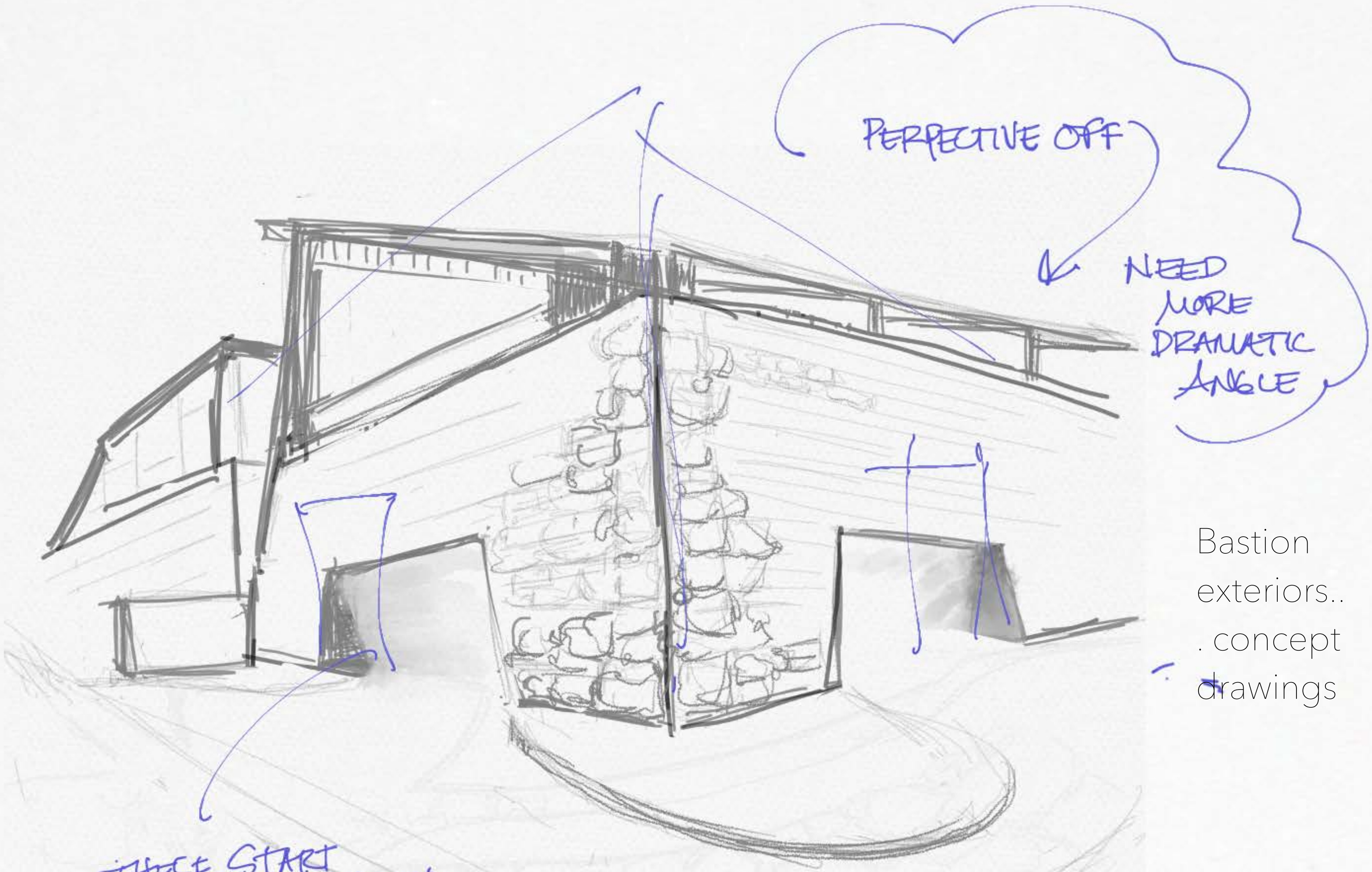
Reinvestigating site specifics



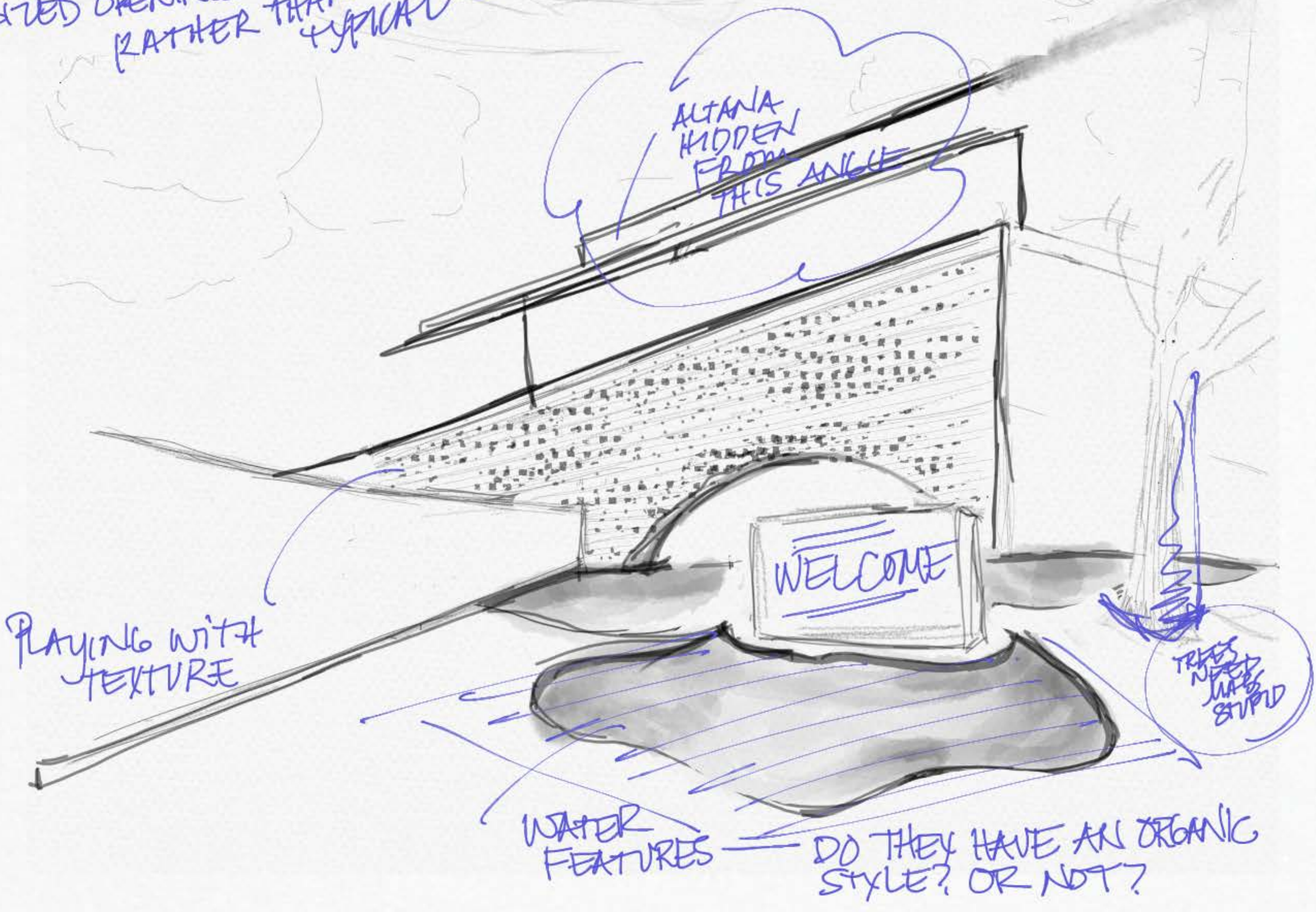
PINTEREST
SEARCHING
FOR MODERN
LUXURY
WATER
FEATURES
TO INCORP
INTO PLAN



Benchmarking:
water, baths,
grotto



THESE START TO BECOME UNIQUE SIZED OPENINGS RATHER THAN TYPICAL



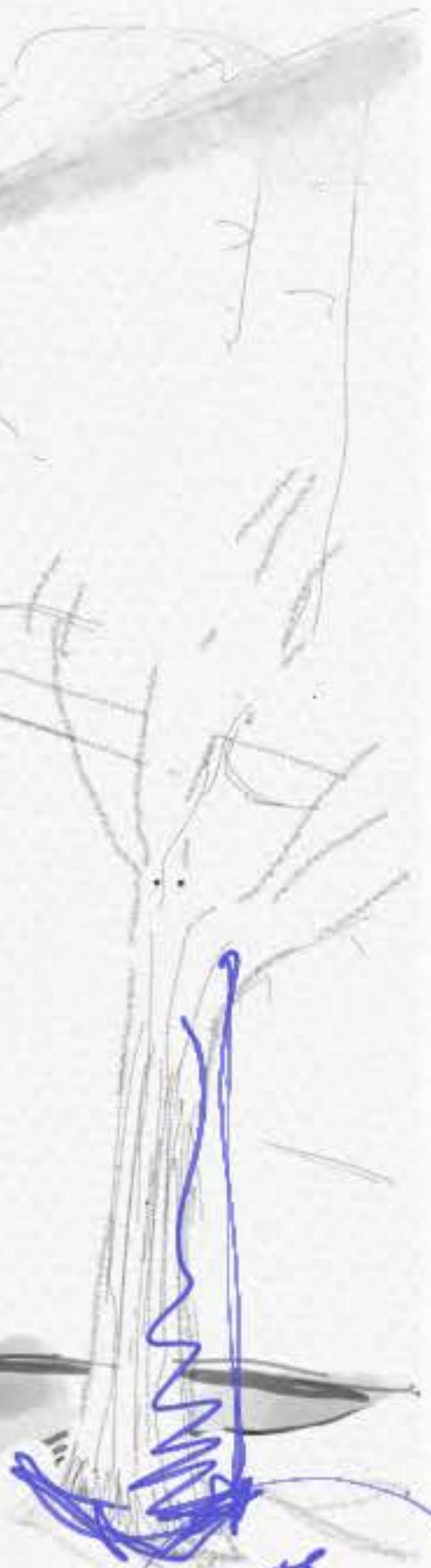
ALTANA HIDDEN FROM THIS ANGLE

PLAYING WITH TEXTURE

WATER FEATURES

DO THEY HAVE AN ORGANIC STYLE? OR NOT?

TREES NEED MORE STUPID



CHA
TEXT



SENT FROM MY DAD
ARTICLE IN LST

ACQUA
E
TERRA

ASK
WHADE'S
GUIDA
REGARDING
SPELLING??

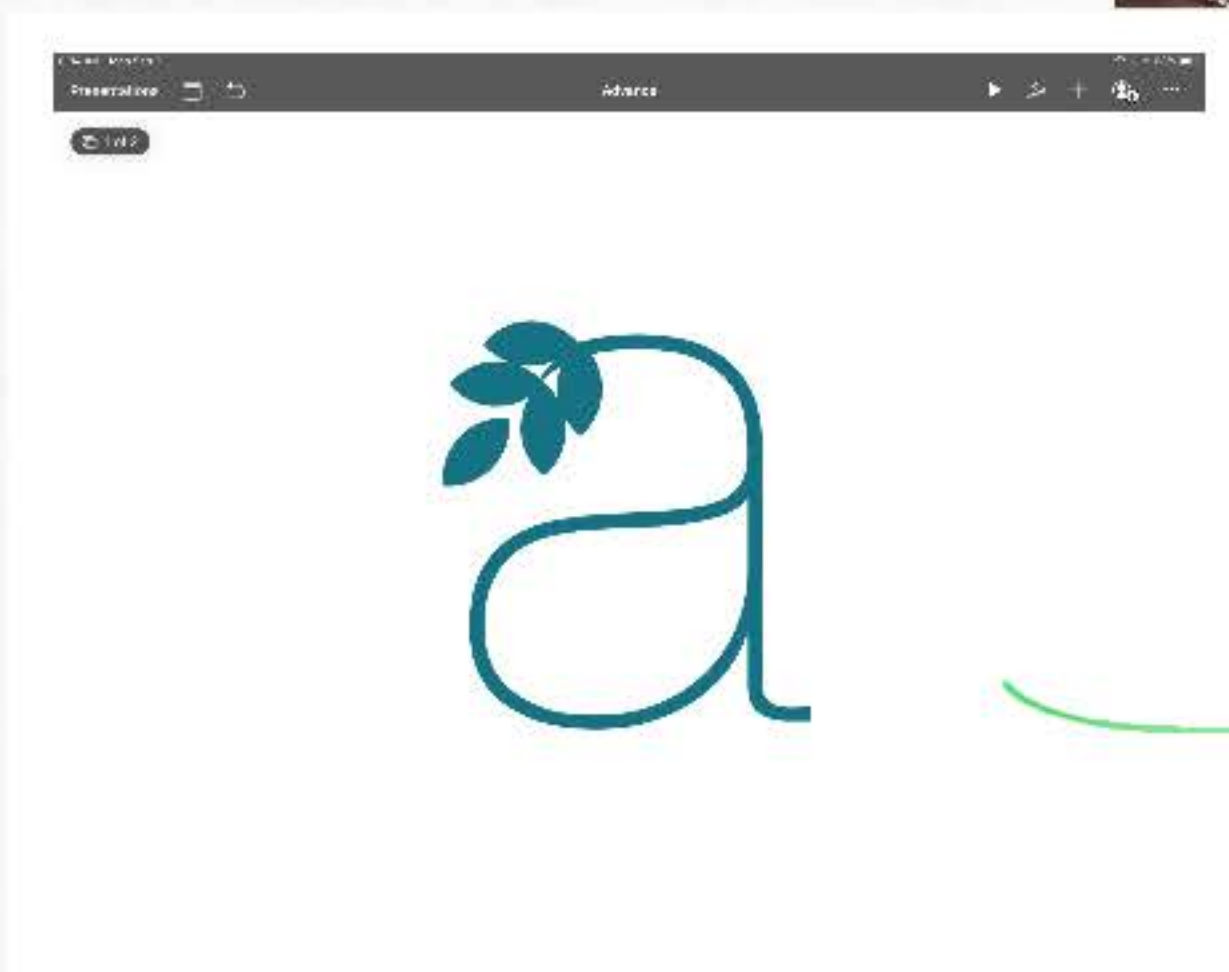
WHY IS THERE SUCH A BAD
RELATIONSHIP DEVELOPING BETWEEN LOCALS/TOURISTS?

ADAPTIVE REUSE OF PARK SYSTEMS
- FABER PARK SKATE PARK - NY
HALPREN - ~~WJZ~~
WANG SHU -
ASKING QUESTIONS &
REFLECTING ON
SOLUTIONS
- WHAT BRINGS TOURISTS & LOCALS TOGETHER?
- WHAT TYPES OF TOURIST?
- GREETING
↳ PERSONA → AVERAGE TOURIST
↳ KNOWLEDGE BASED
↳ DO TOURIST FEEL
- DIAGRAMMING PATHWAYS -

13% OF JOBS ARE BASED IN TOURISM
PARPINOCIO - COLONY
GO
WHAT OTHER ACTIVITIES CAN GO
ON IN THE PARK?
NO LANGUAGE OR HISTORICAL REFERENCES -
LIBRARY THEATRE LECTURE
LEARNING AREA -
REL CENTER -
HOW DO WE KEEP YOUNG PEOPLE HERE?
- CONTEMPORARY - MODERN AMENITIES -
TRANSPORT SYSTEM?
LECTURE
LIVE/WORK - PLAY CENTER
↓ ↓ ↓
EMPHASIS ON GATHERING CULTURAL CENTER
HISTORY FORM
MAT
SOC
BA
THE

- LIVE/WORK
- CULTURAL CENTER
SUSTAINABILITY
GUIDING GOALS:
FORMAL
• VERTICALLY
UNOBSTRUCTED
• ELEGANT
• CONTEMPORARY
SOLUTION
• LAYERED
• ENTRANCE
WEEP HOLES IN BEARING WALLS
GROVE - LOW BURIED SPACE W/ WATER
ALTANA - HIGH AIRY SPACE
SHADED SPACE (ROMAN THEATRE)
ROMAN SISTERS - COOLING
CORNERSTONE - STRENGTH
BACON - LE PROTECTIVE

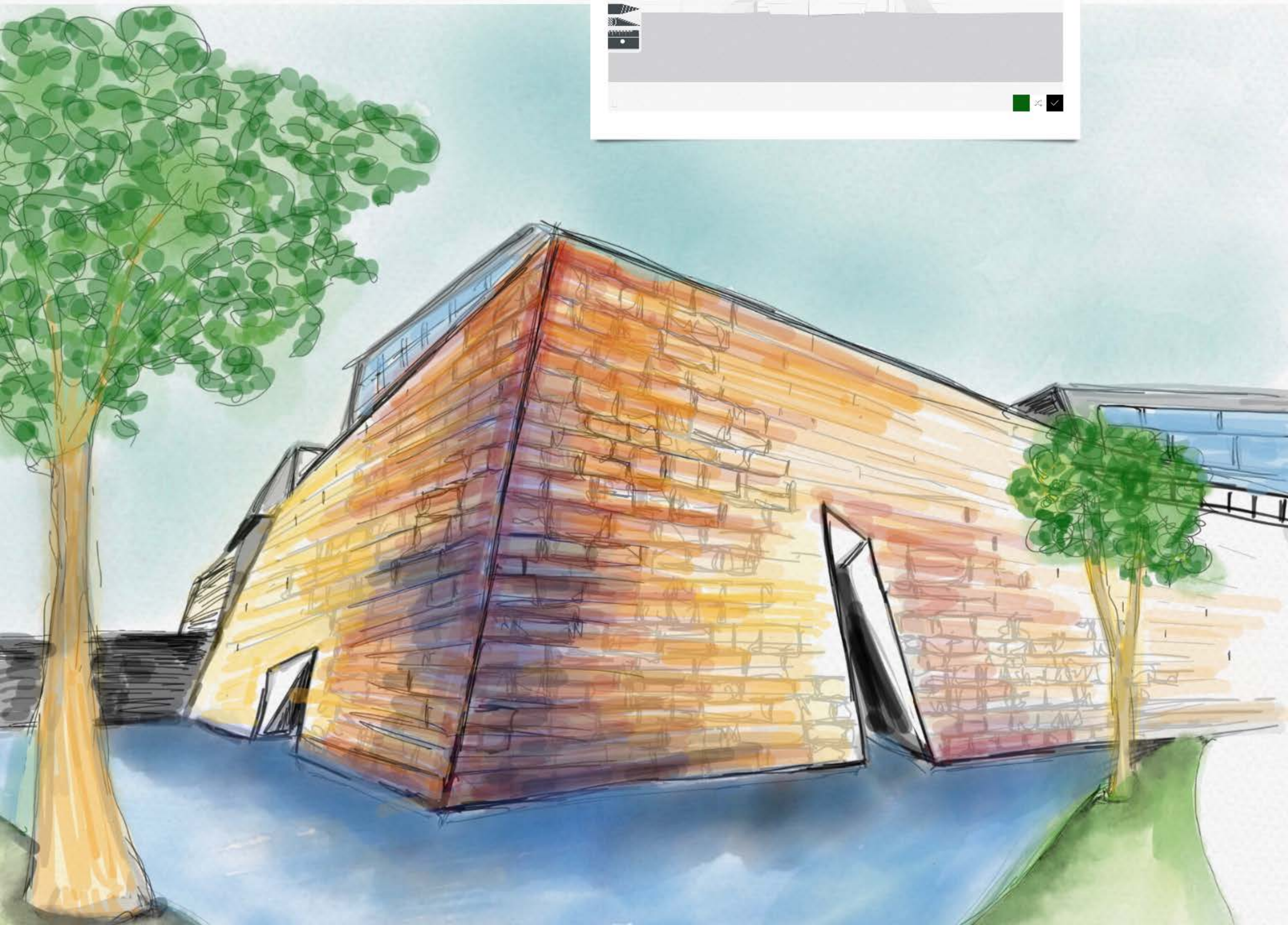
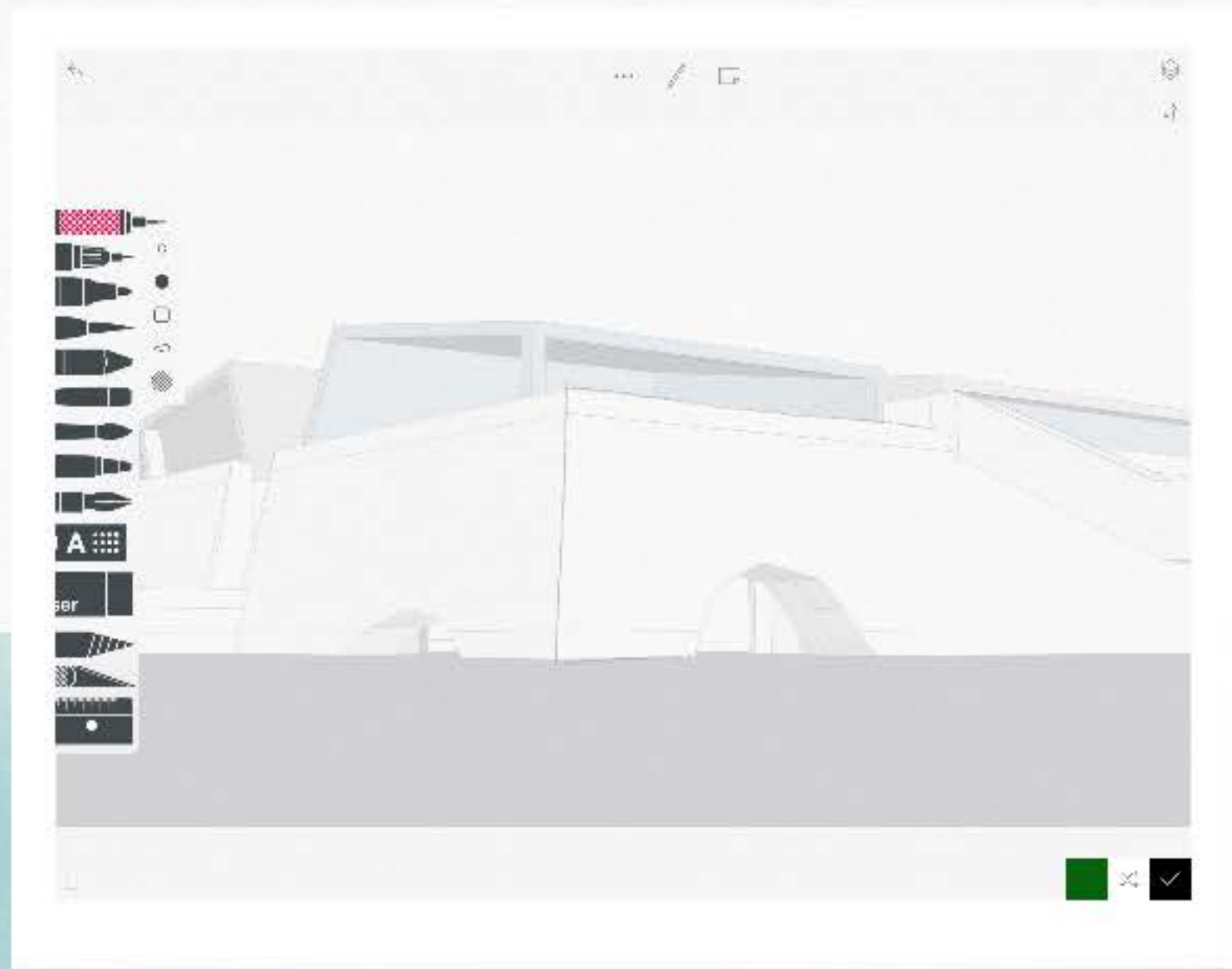
- MAKING CONVENTIONS -
- AMATEUR ATHLETIC SOCIAL
- WOMAN'S FREEDOM
- UNLIKE GREEK/ROMAN
- ETRUSCANS
- MONUMENTAL EMBELLISHING PAIRING
- BASENNIA - RASNA (RASNA) | TERESH | SEA F
HYPERBENTIA
IN LOVE W/ LOVE
7TH CENTURY B.C.
500 B.C. POLITICAL DESTINY
OF ITALY PASSED OUT OF ETRUSCAN HISTORY (HAT
LAST ETRUSCAN CITIES WERE ABSORBED BY R
ETRUSCAN POLITICS WAS BASED IN FAMILY UN
AND SMALL CITY - E'S GREW RICH FROM T



LAND & WATER
WATER & LAND

BEGINNING
DEVELOPMENT OF
LOVE

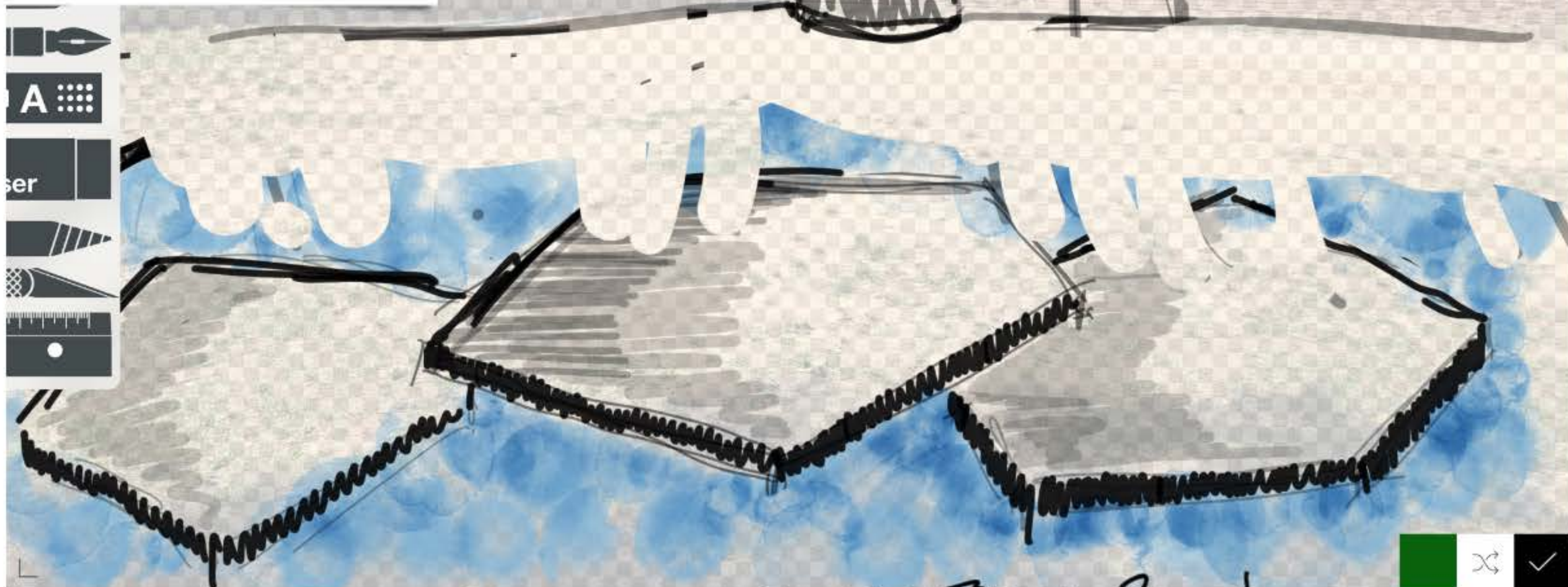
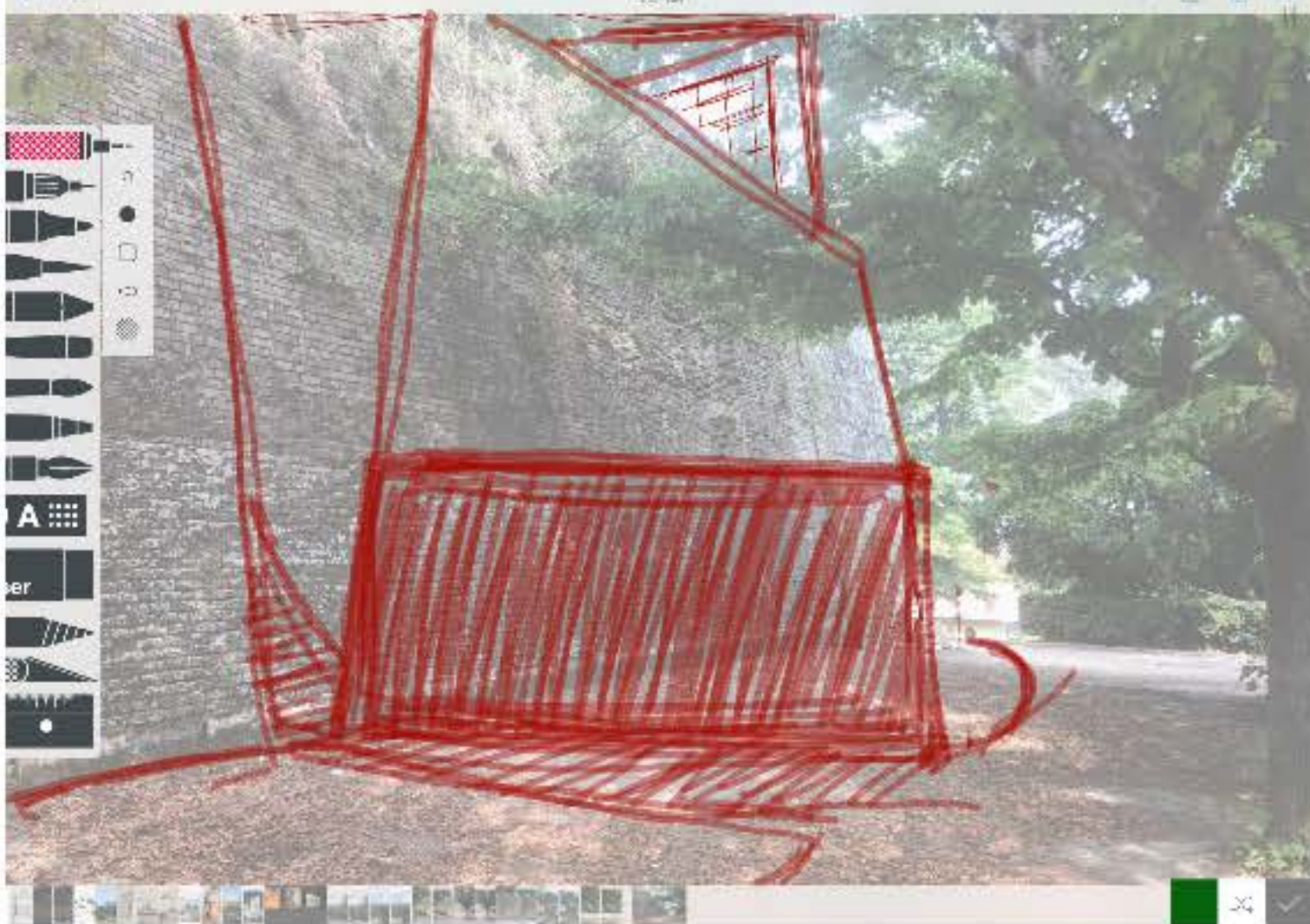
ILLUSTRATION — BASTIONE GROTTO





ELEVATION W/ KITAS -

PLAN WITH
WALKWAYS - (DRY)
INCLUDING VIEW
OF OUTDOOR
SWIMMING AREAS



IDEAS FOR LANDSCAPE ON EXTERIOR FROM PLAN
DRAWING - DONE IN SKETCHES -

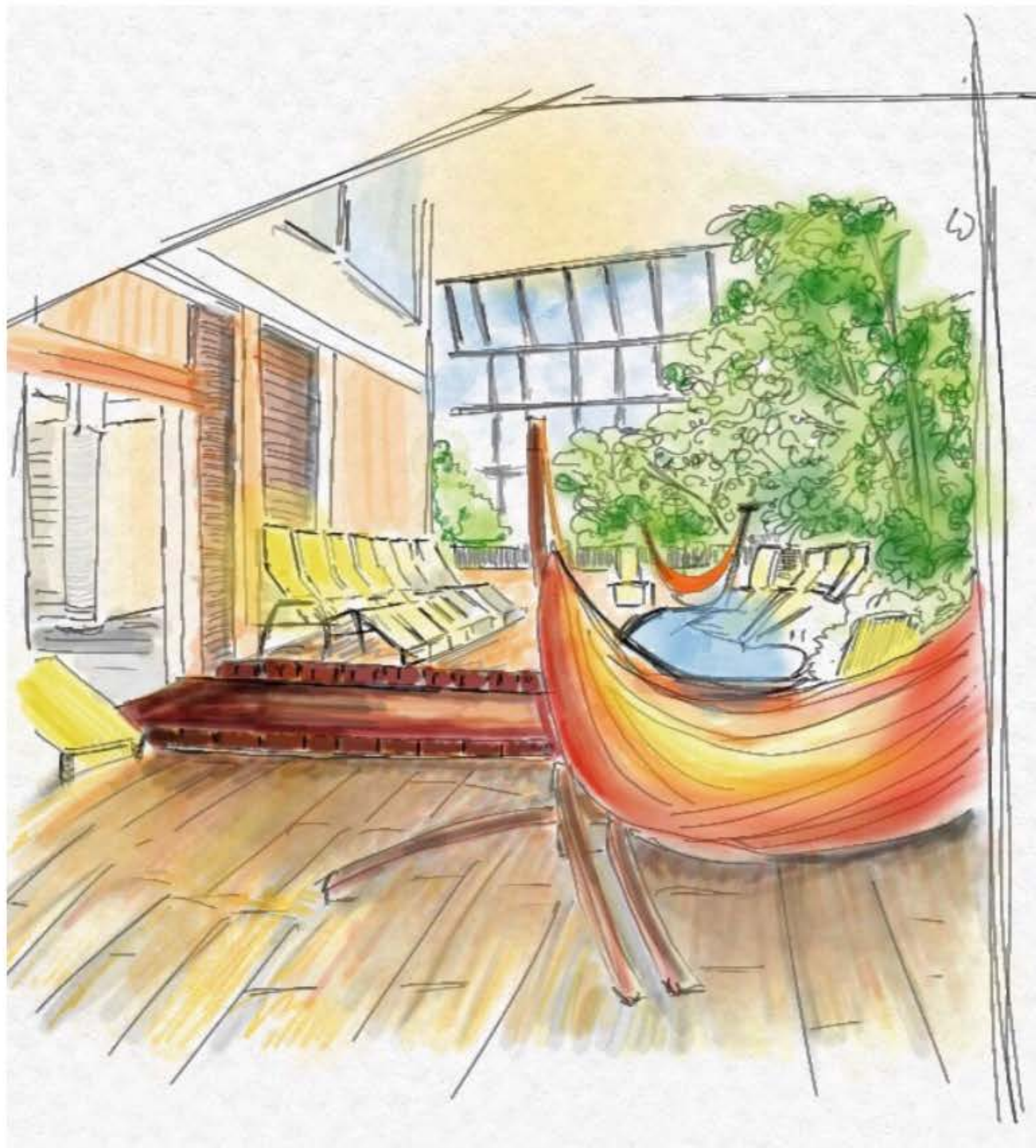


Inside grotto
experience



INTERIOR 'WATERFALLS — PLACES TO HIDE
AND RETREAT —

- ↳ KID FRIENDLY — OPEN IN WINTER —
- ↳ DRY WALKWAYS FOR PEDESTRIANS —
- ↳ INTERIOR TROPICAL ADDITIONS FOR
PLANTS & FLOWERS FOR WINTER GREEN,



FINAL DRAWING/PERSPECTIVE
FOR PRESENTATION -

REPRESENTS -

- ADULT AREAS
- SPA ATMOSPHERE
- OPEN AIR
- A PLACE FOR GATHERING
- FOOD/BEVERAGE SERVICE
- CLOSED HOT & COLD BATHS FOR ADULTS ONLY —

